

Control relay

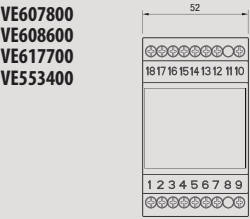
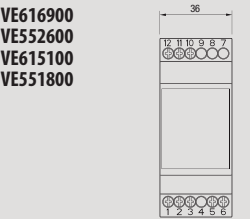
Conductive fluid regulators, for the minimum and maximum level control of deep wells, tanks, cisterns, etc. The operating principle is based on the detection of the fluid resistance on the part of the control box, the level being controlled by means of special probes immersed in the liquid with the longest acting as a common element. When the level of the liquid inside the container of the well wets all three immersed probes a relay is activated and subsequently deactivated only when the level descends, uncovering the lower probe.



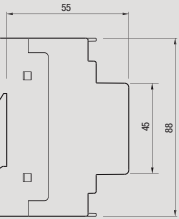
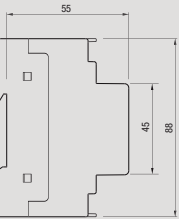
ELETTROSONDA Q

- Tropicalized models
- Can be used in both filling and emptying mode
- Allows keeping the fluid level within the set limits between minimum and maximum level
- Can be used as max or min. alarm threshold
- Fixed sensitivity models (VE607800 and VE608600) or adjustable by trimmer (VE617700, VE553400, VE616900, VE552600, VE615100 and VE551800)
- The EV model allows adjusting the start time delay (0-165) and operation time (filling and emptying)
- To connect probes shielded cables are recommended

Front view

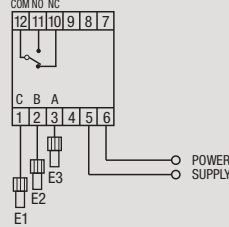


Side view

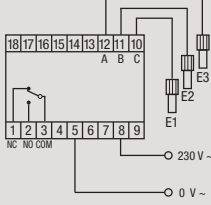


CONNECTION DIAGRAM

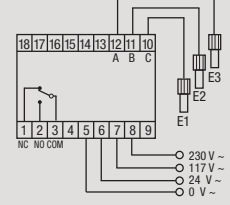
Diagram



VE607800



VE608600-VE617700-VE553400

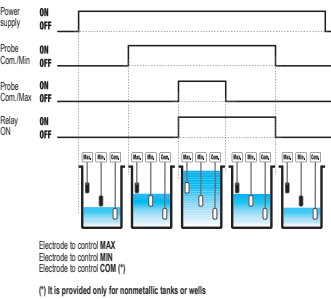


MEASUREMENT AND CONTROL

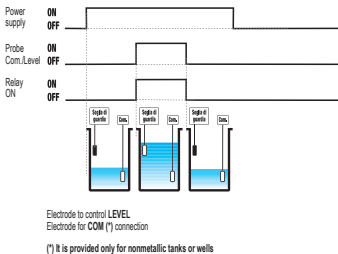
TECHNICAL INFORMATION

RELAY TO CONTROL LIQUIDS

Minimum and maximum level control



One fluid level control



Code	Model	Description	Power supply
VE607800	ELETTROSONDA Q	Relay for conductive liquids	230 V AC
VE608600	ELETTROSONDA Q	Relay for conductive liquids	24-115-230 V AC
VE616900	ELETTROSONDA Q	Relay for conductive liquids	24 V AC
VE552600	ELETTROSONDA Q	Relay for conductive liquids with 3 probes	24 V AC
VE615100	ELETTROSONDA Q	Relay for conductive liquids	230 V AC
VE551800	ELETTROSONDA Q	Relay for conductive liquids with 3 probes	230 V AC
VE617700	ELETTROSONDA Q	Relay for conductive liquids	24-115-230 V AC
VE553400	ELETTROSONDA Q	Relay for conductive liquids with 3 probes	24-115-230 V AC

GENERAL CHARACTERISTICS

Power supply	- cod. VE607800	V AC	230
	- cod. VE608600	V AC	24-115-230
	- cod. VE616900	V AC	24
	- cod. VE552600	V AC	24
	- cod. VE615100	V AC	230
	- cod. VE551800	V AC	230
	- cod. VE617700	V AC	24-115-230
	- cod. VE553400	V AC	24-115-230
Frequency		Hz	50 / 60

Probe sensitivity		
for models with fixed sensitivity	KΩ	5.6
for models with adjustable sensitivity	KΩ	0 ÷ 100
Output relay		5 A / 250 Vac
Terminals		6 mm²
Container	VE616900, VE552600, VE615100, VE551800	2 DIN modules
	VE607800, VE608600, VE617700, VE553400	3 DIN modules
Operating temperature	°C	-10 ÷ +50
Storage temperature	°C	-30 ÷ +80
Humidity		20% ÷ 90% nc

REFERENCE STANDARDS

Compliance with Community Directives: 2014/35/EU (LVD) and 2014/30/EU (EMCD) is declared with reference to the following Standards: EN 61010-1 • EN 61000-6-2 / EN 61000-6-4