

### TECHNICAL CHARACTERISTICS

Series of insulators designed to be used as supports or spacers of electrically active parts such as the bars used to create panels.

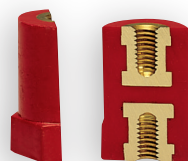
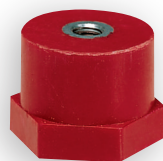
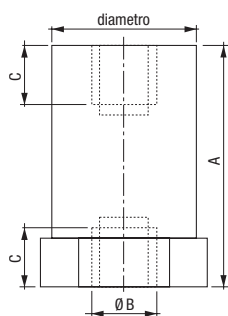
Made of polyester resin with the addition of glass fibres, they guarantee a high mechanical and electrical resistance over time. Furthermore, the material is non absorbing and highly self-extinguishing.

On both resting sides the insulators feature a brass or white iron zincate threaded female insert that, by means of different types of special headless screws, allows the coupling with the parts concerned, while the lower part features a hexagonal band for the fastening.

- Colour: red RAL-3002 (a different colour can be provided on request in case of large orders)
- Arc resistance: > 180 s - ASTM D-495
- Material: self-extinguishing in class V0 (1.6 mm) according to the UL-94 standard
- Operating temperature: -40 °C ÷ +130 °C
- Water absorption: < 0.2% - ASTM D-570
- Tracking resistance: 3 W/min - ASTM D-2302
- For the fastening please refer to the section "GV series accessories"



### DIMENSIONS (mm)



# Spacer column insulators SELECTABLE ELEMENTS

CP SERIES

	Code	Model	Diameter (mm)	Tensile strength (daN)	Flexural strength (daN)	Max rated voltage at 50Hz for 1 min (kV)	Min internal flashover voltage AC (kV)	Operating voltage DC / AC (V)	Height (mm)	
									(A)	(C)
<b>M4 insert</b>										
	SA580800	CP2016-04	20	400	250	3	10	400	16	5
	SA584000	CP2020-04	20	400	250	3.5	10	600	20	5
	SA589900	CP2025-04	20	400	200	5	15	600	25	5
<b>M5 insert</b>										
	SA581600	CP2016-05	20	400	250	3	10	400	16	5
	SA585700	CP2020-05	20	400	250	3.5	10	600	20	5
	SA590700	CP2025-05	20	400	200	5	15	600	25	5
	SA594900	CP2030-05	20	400	200	5	15	600	30	9
	SA597200	CP2035-05	20	400	150	8	25	600	35	9
	SA600400	CP2040-05	20	400	150	8	25	600	40	9
	SA603800	CP2045-05	20	400	100	8	25	600	45	9
	SA606100	CP2050-05	20	400	100	10	30	750	50	9
<b>M6 insert</b>										
	SA582400	CP2016-06	20	400	250	3	10	400	16	5
	SA587300	CP2020-06	20	400	250	3.5	10	600	20	5
	SA591500	CP2025-06	20	400	200	5	15	600	25	5
	SA595600	CP2030-06	20	400	200	5	15	600	30	10
	SA598000	CP2035-06	20	400	150	8	25	600	35	10
	SA601200	CP2040-06	20	400	150	8	25	600	40	10
	SA604600	CP2045-06	20	400	100	8	25	600	45	10
	SA607900	CP2050-06	20	400	100	10	30	750	50	10
	SA609500	CP3030-06	30	900	450	8	25	750	30	10
	SA611100	CP3035-06	30	900	450	8	25	750	35	10
	SA613700	CP3040-06	30	900	300	10	30	1000	40	10
	SA615200	CP3045-06	30	900	300	10	30	1000	45	10
	SA617800	CP3050-06	30	900	200	10	40	1500	50	15
	SA619400	CP3055-06	30	900	200	10	40	1500	55	15
	SA621000	CP3060-06	30	900	150	15	40	1500	60	15
	SA623600	CP3065-06	30	900	150	15	40	1500	65	15
	SA625100	CP3070-06	30	900	150	15	40	1500	70	15

Ultimate strength tolerance  $\pm 10\%$  1 daN = 10 N

	Code	Model	Diameter (mm)	Tensile strength (daN)	Flexural strength (daN)	Max rated voltage at 50Hz for 1 min (kV)	Min internal flashover voltage AC (kV)	Operating voltage DC / AC (V)	Height (mm)	
									(A)	(C)
<b>M8 insert</b>										
	SA583200	CP2016-08	20	400	250	3	10	400	16	5
	SA588100	CP2020-08	20	400	250	3.5	10	600	20	5
	SA592300	CP2025-08	20	400	200	5	15	600	25	5
	SA596400	CP2030-08	20	400	200	5	15	600	30	10
	SA599800	CP2035-08	20	400	150	8	25	600	35	10
	SA602000	CP2040-08	20	400	150	8	25	600	40	10
	SA605300	CP2045-08	20	400	100	8	25	600	45	10
	SA608700	CP2050-08	20	400	100	10	30	750	50	10
	SA610300	CP3030-08	30	900	450	8	25	750	30	10
	SA612900	CP3035-08	30	900	450	8	25	750	35	10
	SA614500	CP3040-08	30	900	300	10	30	1000	40	10
	SA616000	CP3045-08	30	900	300	10	30	1000	45	15
	SA618600	CP3050-08	30	900	200	10	40	1500	50	15
	SA620200	CP3055-08	30	900	200	10	40	1500	55	15
	SA622800	CP3060-08	30	900	150	15	40	1500	60	15
	SA624400	CP3065-08	30	900	150	15	40	1500	65	15
	SA626900	CP3070-08	30	900	150	15	40	1500	70	15
	SA627700	CP4030-08	40	1000	700	8	25	750	30	10
	SA629300	CP4035-08	40	1000	700	8	25	750	35	10
	SA631900	CP4040-08	40	1000	500	10	30	1000	40	10
	SA634300	CP4045-08	40	1000	500	10	30	1000	45	15
	SA637600	CP4050-08	40	1000	500	10	40	1500	50	15
	SA640000	CP4055-08	40	1000	500	10	40	1500	55	15
	SA646700	CP4060-08	40	1000	370	15	40	1500	60	15
<b>M10 insert</b>										
	SA628500	CP4030-10	40	1000	700	8	25	750	30	10
	SA630100	CP4035-10	40	1000	700	8	25	750	35	10
	SA632700	CP4040-10	40	1000	500	10	30	1000	40	10
	SA635000	CP4045-10	40	1000	500	10	30	1000	45	15
	SA638400	CP4050-10	40	1000	500	10	40	1500	50	15
	SA642600	CP4055-10	40	1000	500	10	40	1500	55	15
	SA647500	CP4060-10	40	1000	370	15	40	1500	60	15
<b>M12 insert</b>										
	SA633500	CP4040-12	40	1000	500	10	30	1000	40	12
	SA636800	CP4045-12	40	1000	500	10	30	1000	45	16
	SA639200	CP4050-12	40	1000	500	10	40	1500	50	16
	SA645900	CP4055-12	40	1000	500	10	40	1500	55	16
	SA648300	CP4060-12	40	1000	370	15	40	1500	60	16

Ultimate strength tolerance  $\pm 10\%$  1 daN = 10 N