

TECHNICAL CHARACTERISTICS

Series of insulators designed to be used as supports or spacers of electrically active parts such as the bars used to create panels.

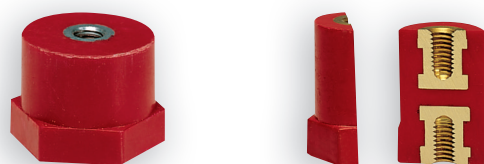
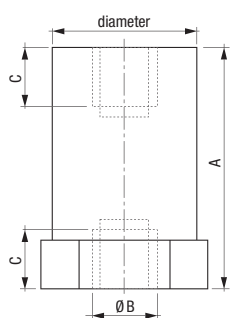
Made of polyester or polyamide resin with the addition of glass fibres,, they guarantee a high mechanical and electrical resistance over time. Furthermore, the material is non absorbing and highly self-extinguishing.

On both resting sides the insulators feature a brass or white iron zincate threaded female insert that, by means of different types of special headless screws, allows the coupling with the parts concerned, while the lower part features a hexagonal band for the fastening.

- Colour: red RAL-3002 (a different colour can be provided on request in case of large orders)
- Arc resistance: > 180 s - ASTM D-495
- Material: self-extinguishing in class V0 (1.6 mm) according to the UL-94 standard
- Operating temperature: -40 °C ÷ +130 °C
- Water absorption: < 0.2% - ASTM D-570
- Tracking resistance: 3 W/min - ASTM D-2302
- For the fastening please refer to the section "GV series accessories"



DIMENSIONS (mm)



Variable dimensions according to the model.
See tables below.

Spacer column insulators SELECTABLE ELEMENTS

CP SERIES

	Code	Model	Material*	Height (mm)		Diameter (mm)	Tensile strength (daN)	Flexural strength (daN)	Rated voltage at 50Hz for 1 min (kV)	Min internal flashover voltage AC (kV)	Operating voltage DC / AC (V)
				(A)	(C)						
M4 insert											
	SA580800	CP2016-04	PA	16	5	20	400	250	3	10	400
	SA584000	CP2020-04	PA	20	5	20	400	250	3,5	10	600
	SA589900	CP2025-04	PA	25	5	20	400	200	5	15	600
M5 insert											
	SA581600	CP2016-05	PA	16	5	20	400	250	3	10	400
	SA585700	CP2020-05	PA	20	5	20	400	250	3,5	10	600
	SA590700	CP2025-05	PA	25	5	20	400	200	5	15	600
	SA594900	CP2030-05	PA	30	9	20	400	200	5	15	600
	SA597200	CP2035-05	PA	35	9	20	400	150	8	25	600
	SA600400	CP2040-05	PA	40	9	20	400	150	8	25	600
	SA603800	CP2045-05	PA	45	9	20	400	100	8	25	600
	SA606100	CP2050-05	PA	50	9	20	400	100	10	30	750
M6 insert											
	SA582400	CP2016-06	PA	16	4	20	400	250	3	10	400
	SA587300	CP2020-06	PA	20	5	20	400	250	3,5	10	600
	SA591500	CP2025-06	PA	25	5	20	400	200	5	15	600
	SA595600	CP2030-06	PA	30	9	20	400	200	5	15	600
	SA598000	CP2035-06	PA	35	9	20	400	150	8	25	600
	SA601200	CP2040-06	PA	40	9	20	400	150	8	25	600
	SA604600	CP2045-06	PA	45	9	20	400	100	8	25	600
	SA607900	CP2050-06	PA	50	9	20	400	100	10	30	750
	SA609500	CP3030-06	PA	30	9	30	900	450	8	25	750
	SA611100	CP3035-06	PA	35	10	30	900	450	8	25	750
	SA613700	CP3040-06	PA	40	10	30	900	300	10	30	1000
	SA615200	CP3045-06	PA	45	15	30	900	300	10	30	1000
	SA617800	CP3050-06	PA	50	15	30	900	200	10	40	1500
	SA619400	CP3055-06	PA	55	15	30	900	200	10	40	1500
	SA621000	CP3060-06	PA	60	15	30	900	150	15	40	1500
	SA623600	CP3065-06	PA	65	15	30	900	150	15	40	1500
	SA625100	CP3070-06	PA	70	15	30	900	150	15	40	1500

Ultimate strength tolerance $\pm 10\%$ 1 daN = 10 N

* PA= Polyamide / BMC= Mass Polyester

	Code	Model	Material*	Height (mm)		Diameter (mm)	Tensile strength (daN)	Flexural strength (daN)	Rated voltage at 50Hz for 1 min (kV)	Min internal flashover voltage AC (kV)	Operating voltage DC / AC (V)
				(A)	(C)						
M8 insert											
	SA583200	CP2016-08	PA	16	4	20	400	250	3	10	400
	SA588100	CP2020-08	PA	20	4	20	400	250	3,5	10	600
	SA592300	CP2025-08	PA	25	4	20	400	200	5	15	600
	SA596400	CP2030-08	PA	30	10	20	400	200	5	15	600
	SA599800	CP2035-08	PA	35	10	20	400	150	8	25	600
	SA602000	CP2040-08	PA	40	10	20	400	150	8	25	600
	SA605300	CP2045-08	PA	45	10	20	400	100	8	25	600
	SA608700	CP2050-08	PA	50	10	20	400	100	10	30	750
	SA610300	CP3030-08	PA	30	9	30	900	450	8	25	750
	SA612900	CP3035-08	PA	35	10	30	900	450	8	25	750
	SA614500	CP3040-08	PA	40	10	30	900	300	10	30	1000
	SA616000	CP3045-08	PA	45	15	30	900	300	10	30	1000
	SA618600	CP3050-08	PA	50	15	30	900	200	10	40	1500
	SA620200	CP3055-08	PA	55	15	30	900	200	10	40	1500
	SA622800	CP3060-08	PA	60	15	30	900	150	15	40	1500
	SA624400	CP3065-08	PA	65	15	30	900	150	15	40	1500
	SA626900	CP3070-08	PA	70	15	30	900	150	15	40	1500
	SA627700	CP4030-08	PA	30	9	40	1000	700	8	25	750
	SA629300	CP4035-08	PA	35	10	40	1000	700	8	25	750
	SA631900	CP4040-08	PA	40	10	40	1000	500	10	30	1000
	SA634300	CP4045-08	PA	45	15	40	1000	500	10	30	1000
	SA637600	CP4050-08	PA	50	15	40	1000	500	10	40	1500
	SA640000	CP4055-08	PA	55	15	40	1000	500	10	40	1500
	SA646700	CP4060-08	PA	60	15	40	1000	370	15	40	1500
M10 insert											
	SA628500	CP4030-10	PA	30	8	40	1000	700	8	25	750
	SA630100	CP4035-10	PA	35	10	40	1000	700	8	25	750
	SA632700	CP4040-10	PA	40	10	40	1000	500	10	30	1000
	SA635000	CP4045-10	PA	45	15	40	1000	500	10	30	1000
	SA638400	CP4050-10	PA	50	15	40	1000	500	10	40	1500
	SA642600	CP4055-10	PA	55	15	40	1000	500	10	40	1500
	SA647500	CP4060-10	PA	60	15	40	1000	370	15	40	1500
M12 insert											
	SA633500	CP4040-12	PA	40	12	40	1000	500	10	30	1000
	SA636800	CP4045-12	PA	45	14	40	1000	500	10	30	1000
	SA639200	CP4050-12	PA	50	14	40	1000	500	10	40	1500
	SA645900	CP4055-12	PA	55	14	40	1000	500	10	40	1500
	SA648300	CP4060-12	PA	60	14	40	1000	370	15	40	1500

Ultimate strength tolerance $\pm 10\%$ 1 daN = 10 N

* PA= Polyamide / BMC= Mass Polyester