

TECHNICAL CHARACTERISTICS

Series of insulators designed to be used as supports or spacers of electrically active parts such as the bars used to create panels.

Made of polyamide resin with the addition of glass fibres, they guarantee a high mechanical and electrical resistance over time. Furthermore, the material is non absorbing and highly self-extinguishing.

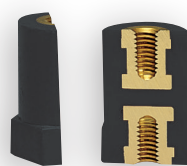
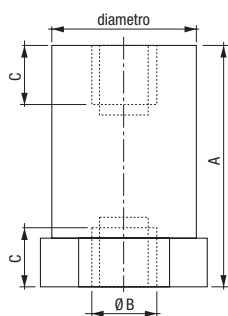
The material used is "halogen free" UL V0.

On both resting sides the insulators feature a brass or white iron zincate threaded female insert that, by means of different types of special headless screws, allows the coupling with the parts concerned, while the lower part features a hexagonal band for the fastening.

- Colour: black
- Arc resistance: > 180 s - ASTM D-495
- The material used is "halogen free" UL V0
- Material: self-extinguishing in class V0 (1.6 mm) according to the UL-94 standard
- Operating temperature: -40 °C ÷ +130 °C
- Water absorption: < 0.2% - ASTM D-570
- Tracking resistance: 3 W/min - ASTM D-2302
- For the fastening please refer to the section "GV series accessories"
- Halogen free



DIMENSIONS (mm)



Spacer column insulators SELECTABLE ELEMENTS

CP UL SERIES

Code	Model	Diameter (mm)	Tensile strength (daN)	Flexural strength (daN)	Max rated voltage at 50Hz for 1 min (kV)	Min internal flashover voltage AC (kV)	Operating voltage DC / AC (V)	Height (mm)	
								(A)	(C)
M4 insert									
SA58080099	CP2016-04	20	400	250	3	10	400	16	5
SA58400099	CP2020-04	20	400	250	3.5	10	600	20	5
SA58990099	CP2025-04	20	400	200	5	15	600	25	5
M5 insert									
SA58160099	CP2016-05	20	400	250	3	10	400	16	5
SA58570099	CP2020-05	20	400	250	3.5	10	600	20	5
SA59070099	CP2025-05	20	400	200	5	15	600	25	5
SA59490099	CP2030-05	20	400	200	5	15	600	30	9
SA59720099	CP2035-05	20	400	150	8	25	600	35	9
SA60040099	CP2040-05	20	400	150	8	25	600	40	9
SA60380099	CP2045-05	20	400	100	8	25	600	45	9
SA60610099	CP2050-05	20	400	100	10	30	750	50	9
M6 insert									
SA58240099	CP2016-06	20	400	250	3	10	400	16	5
SA58730099	CP2020-06	20	400	250	3.5	10	600	20	5
SA59150099	CP2025-06	20	400	200	5	15	600	25	5
SA59560099	CP2030-06	20	400	200	5	15	600	30	10
SA59800099	CP2035-06	20	400	150	8	25	600	35	10
SA60120099	CP2040-06	20	400	150	8	25	600	40	10
SA60460099	CP2045-06	20	400	100	8	25	600	45	10
SA60790099	CP2050-06	20	400	100	10	30	750	50	10
SA60950099	CP3030-06	30	900	450	8	25	750	30	10
SA61110099	CP3035-06	30	900	450	8	25	750	35	10
SA61370099	CP3040-06	30	900	300	10	30	1000	40	10
SA61520099	CP3045-06	30	900	300	10	30	1000	45	10
SA61780099	CP3050-06	30	900	200	10	40	1500	50	15
SA61940099	CP3055-06	30	900	200	10	40	1500	55	15
SA62100099	CP3060-06	30	900	150	15	40	1500	60	15
SA62360099	CP3065-06	30	900	150	15	40	1500	65	15
SA62510099	CP3070-06	30	900	150	15	40	1500	70	15

Ultimate strength tolerance $\pm 10\%$ 1 daN = 10 N

Code	Model	Diameter (mm)	Tensile strength (daN)	Flexural strength (daN)	Max rated voltage at 50Hz for 1 min (kV)	Min internal flashover voltage AC (kV)	Operating voltage DC / AC (V)	Height (mm)	
								(A)	(C)
M8 insert									
SA58320099	CP2016-08	20	400	250	3	10	400	16	5
SA58810099	CP2020-08	20	400	250	3.5	10	600	20	5
SA59230099	CP2025-08	20	400	200	5	15	600	25	5
SA59640099	CP2030-08	20	400	200	5	15	600	30	10
SA59980099	CP2035-08	20	400	150	8	25	600	35	10
SA60200099	CP2040-08	20	400	150	8	25	600	40	10
SA60530099	CP2045-08	20	400	100	8	25	600	45	10
SA60870099	CP2050-08	20	400	100	10	30	750	50	10
SA61030099	CP3030-08	30	900	450	8	25	750	30	10
SA61290099	CP3035-08	30	900	450	8	25	750	35	10
SA61450099	CP3040-08	30	900	300	10	30	1000	40	10
SA61600099	CP3045-08	30	900	300	10	30	1000	45	15
SA61860099	CP3050-08	30	900	200	10	40	1500	50	15
SA62020099	CP3055-08	30	900	200	10	40	1500	55	15
SA62280099	CP3060-08	30	900	150	15	40	1500	60	15
SA62440099	CP3065-08	30	900	150	15	40	1500	65	15
SA62690099	CP3070-08	30	900	150	15	40	1500	70	15
SA62770099	CP4030-08	40	1000	700	8	25	750	30	10
SA62930099	CP4035-08	40	1000	700	8	25	750	35	10
SA63190099	CP4040-08	40	1000	500	10	30	1000	40	10
SA63430099	CP4045-08	40	1000	500	10	30	1000	45	15
SA63760099	CP4050-08	40	1000	500	10	40	1500	50	15
SA64000099	CP4055-08	40	1000	500	10	40	1500	55	15
SA64670099	CP4060-08	40	1000	370	15	40	1500	60	15
M10 insert									
SA62850099	CP4030-10	40	1000	700	8	25	750	30	10
SA63010099	CP4035-10	40	1000	700	8	25	750	35	10
SA63270099	CP4040-10	40	1000	500	10	30	1000	40	10
SA63500099	CP4045-10	40	1000	500	10	30	1000	45	15
SA63840099	CP4050-10	40	1000	500	10	40	1500	50	15
SA64260099	CP4055-10	40	1000	500	10	40	1500	55	15
SA64750099	CP4060-10	40	1000	370	15	40	1500	60	15
M12 insert									
SA63350099	CP4040-12	40	1000	500	10	30	1000	40	12
SA63680099	CP4045-12	40	1000	500	10	30	1000	45	16
SA63920099	CP4050-12	40	1000	500	10	40	1500	50	16
SA64590099	CP4055-12	40	1000	500	10	40	1500	55	16
SA64830099	CP4060-12	40	1000	370	15	40	1500	60	16

Ultimate strength tolerance $\pm 10\%$ 1 daN = 10 N