

# Petticoat insulators

# CI SERIES

## TECHNICAL CHARACTERISTICS

Series of insulators designed to be used as supports or spacers of electrically active parts such as bars or leads used to create LV and MV electric systems. Their typical bell shape makes them particularly suitable to be used in environments with a high percentage of humidity or a high degree of fine suspended dust.

Indeed, the profile structure provides a creepage distance that satisfies the rated voltage as well as humidity runoff and the non continuous formation of dust deposits.

Made of polyester resin with the addition of glass fibres, they guarantee a high mechanical and electrical resistance over time.

On request the non-absorbing and highly self-extinguishing material used can be provided in its antiacid version, which is particularly suitable for use in contaminated atmospheres.

On both resting sides the insulators feature a brass threaded female insert that, by means of different types of special headless screws, allows the coupling with the parts concerned.

- Colour: red RAL-3002 (a different colour can be provided on request in case of large orders)
- Arc resistance: > 180 s - ASTM D-495
- Material: self-extinguishing in class V0 in according to the UL-94 standard
- Operating temperature: -40 °C ÷ +130 °C
- Water absorption: < 0.2% - ASTM D-570
- For the fastening please refer to the section "GV series accessories"



## SELECTABLE ELEMENTS

### SELECTABLE ELEMENTS MODULAR SERIES

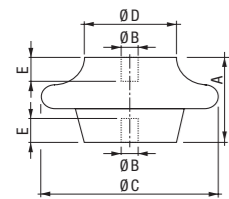
	Code	Model	Tensile strength (daN)	Compressive strength (daN)	Torsion strength (daN)	Flexural strength (daN)	Minimum surface flashover voltage AC (kV)	Minimum internal flashover voltage AC (kV)	Operating voltage DC / AC (V)	Height (mm)				
										(A)	(C)	(D)	(E)	
<b>M8 insert</b>														
	SA659000	CI052-8	1950	14700	10	980	50	40	5	52	100	52	15	
<b>M10 insert</b>														
	SA660800	CI052-10	1950	14700	10	980	50	40	5	52	100	52	15	
<b>M12 insert</b>														
	SA661600	CI052-12	1950	14700	10	980	50	40	5	52	100	52	16	
	SA663200	CI067-12	1950	14700	10	980	50	40	6	67	100	52	25	
	SA665700	CI160-12	1950	14700	10	500	50	40	6	100	100	45	25	
<b>M16 insert</b>														
	SA662400	CI052-16	1950	14700	10	980	50	40	5	52	100	52	16	
	SA664000	CI067-16	1950	14700	10	980	50	40	5	67	100	52	25	
	SA666500	CI160-16	1950	14700	10	500	50	40	5	160	100	45	25	

Ultimate strength tolerance ±10% 1 daN = 10 N

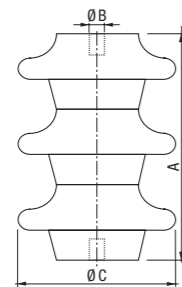
# INSULATORS AND BUSBAR SUPPORTS

## DIMENSIONS (mm)

Modular CI series



CI format series



### SELECTABLE ELEMENTS FORMAT SERIES

	Code	Model	Rated voltage (kV)	Maximum operating voltage (kV)	Max rated voltage at industrial frequency (kV)	Max rated pulse voltaged (kV)	Height (mm)		
							(A)	(C)	(No. of elements)
<b>M12 insert</b>									
	SA649100	CI006-12	6	7.2	28	60	52	100	1
	SA651700	CI010-12	10	12	38	75	104	100	2
	SA653300	CI015-12	15	17.5	45	95	156	100	3
	SA655800	CI020-12	20	24	55	125	208	100	4
	SA657400	CI030-12	30	36	75	170	260	100	5
<b>M16 insert</b>									
	SA650900	CI006-16	6	7.2	28	60	52	100	1
	SA652500	CI010-16	10	12	38	75	104	100	2
	SA654100	CI015-16	15	17.5	45	95	156	100	3
	SA656600	CI020-16	20	24	55	125	208	100	4
	SA658200	CI030-16	30	36	75	170	260	100	5

Ultimate strength tolerance ±10% 1 daN = 10 N