

Petticoat insulators

CI SERIES



TECHNICAL CHARACTERISTICS

Series of insulators designed to be used as supports or spacers of electrically active parts such as bars or leads used to create LV and MV electric systems. Their typical bell shape makes them particularly suitable to be used in environments with a high percentage of humidity or a high degree of fine suspended dust.

Indeed, the profile structure provides a creepage distance that satisfies the rated voltage as well as humidity runoff and the non continuous formation of dust deposits.

Made of polyester resin with the addition of glass fibres, they guarantee a high mechanical and electrical resistance over time.

On request the non-absorbing and highly self-extinguishing material used can be provided in its antiacid version, which is particularly suitable for use in contaminated atmospheres.

On both resting sides the insulators feature a brass threaded female insert that, by means of different types of special headless screws, allows the coupling with the parts concerned.

- Colour: red RAL-3002 (a different colour can be provided on request in case of large orders)
- Arc resistance: > 180 s - ASTM D-495
- Material: self-extinguishing in class V0 in according to the UL-94 standard
- Operating temperature: -40 °C ÷ +130 °C
- Water absorption: < 0.2% - ASTM D-570
- For the fastening please refer to the section "GV series accessories"

SELECTABLE ELEMENTS

SELECTABLE ELEMENTS MODULAR SERIES

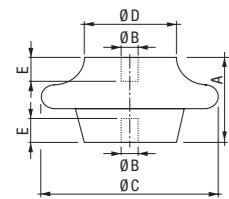
| | Code | Model | Tensile strength (daN) | Compressive strength (daN) | Torsion strength (daN) | Flexural strength (daN) | Minimum surface flashover voltage AC (kV) | Minimum internal flashover voltage AC (kV) | Operating voltage DC / AC (V) | Height (mm) | | | |
|-------------------|----------|----------|------------------------|----------------------------|------------------------|-------------------------|---|--|-------------------------------|-------------|-----|-----|-----|
| | | | | | | | | | | (A) | (C) | (D) | (E) |
| M8 insert | | | | | | | | | | | | | |
| | SA659000 | CI052-8 | 1950 | 14700 | 10 | 980 | 50 | 40 | 5 | 52 | 100 | 52 | 15 |
| M10 insert | | | | | | | | | | | | | |
| | SA660800 | CI052-10 | 1950 | 14700 | 10 | 980 | 50 | 40 | 5 | 52 | 100 | 52 | 15 |
| M12 insert | | | | | | | | | | | | | |
| | SA661600 | CI052-12 | 1950 | 14700 | 10 | 980 | 50 | 40 | 5 | 52 | 100 | 52 | 16 |
| | SA663200 | CI067-12 | 1950 | 14700 | 10 | 980 | 50 | 40 | 6 | 67 | 100 | 52 | 25 |
| | SA665700 | CI160-12 | 1950 | 14700 | 10 | 500 | 50 | 40 | 6 | 100 | 100 | 45 | 25 |
| M16 insert | | | | | | | | | | | | | |
| | SA662400 | CI052-16 | 1950 | 14700 | 10 | 980 | 50 | 40 | 5 | 52 | 100 | 52 | 16 |
| | SA664000 | CI067-16 | 1950 | 14700 | 10 | 980 | 50 | 40 | 5 | 67 | 100 | 52 | 25 |
| | SA666500 | CI160-16 | 1950 | 14700 | 10 | 500 | 50 | 40 | 5 | 160 | 100 | 45 | 25 |

Ultimate strength tolerance ±10% 1 daN = 10 N

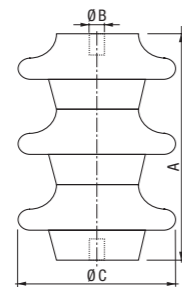
INSULATORS AND BUSBAR SUPPORTS

DIMENSIONS (mm)

Modular CI series



CI format series



SELECTABLE ELEMENTS FORMAT SERIES

| | Code | Model | Rated voltage (kV) | Maximum operating voltage (kV) | Max rated voltage at industrial frequency (kV) | Max rated pulse voltaged (kV) | Height (mm) | | |
|-------------------|----------|----------|--------------------|--------------------------------|--|-------------------------------|-------------|-----|-------------------|
| | | | | | | | (A) | (C) | (No. of elements) |
| M12 insert | | | | | | | | | |
| | SA649100 | CI006-12 | 6 | 7.2 | 28 | 60 | 52 | 100 | 1 |
| | SA651700 | CI010-12 | 10 | 12 | 38 | 75 | 104 | 100 | 2 |
| | SA653300 | CI015-12 | 15 | 17.5 | 45 | 95 | 156 | 100 | 3 |
| | SA655800 | CI020-12 | 20 | 24 | 55 | 125 | 208 | 100 | 4 |
| | SA657400 | CI030-12 | 30 | 36 | 75 | 170 | 260 | 100 | 5 |
| M16 insert | | | | | | | | | |
| | SA650900 | CI006-16 | 6 | 7.2 | 28 | 60 | 52 | 100 | 1 |
| | SA652500 | CI010-16 | 10 | 12 | 38 | 75 | 104 | 100 | 2 |
| | SA654100 | CI015-16 | 15 | 17.5 | 45 | 95 | 156 | 100 | 3 |
| | SA656600 | CI020-16 | 20 | 24 | 55 | 125 | 208 | 100 | 4 |
| | SA658200 | CI030-16 | 30 | 36 | 75 | 170 | 260 | 100 | 5 |

Ultimate strength tolerance ±10% 1 daN = 10 N