

TECHNICAL CHARACTERISTICS

Series of insulators designed to be used as tensioning elements with electrically active parts such as leads used to create electric systems and their relevant support.

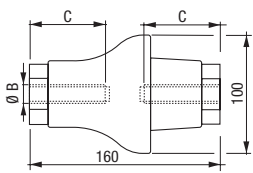
Available in two versions: one complete with the terminal ring elements and the other without them. They are designed with opposing threads, a right one and a left one, and the span of the two rings (maximum opening and minimum closing) is approximately 80 mm.

Made of polyester resin with the addition of glass fibres, they guarantee a high mechanical and electrical resistance over time. Furthermore, the material used is non absorbing and highly self-extinguishing.

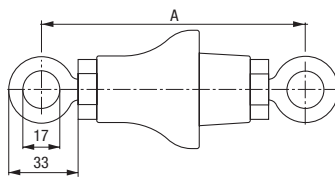
- Colour: red RAL-3002 (a different colour can be provided on request in case of large orders)
- Arc resistance: > 180 s - ASTM D-495
- Material: self-extinguishing in class V0 according to with the UL-94 standard
- Operating temperature: -40 °C ÷ +130 °C
- Water absorption: 0.013% - ASTM D-570



TEP 1



TEP 2



SELECTABLE ELEMENTS

Code	Model	Ultimate tensile strength (da N)	Min superficial flashover voltage AC (kV)	Min internal flashover voltage AC (kV)	Operating voltage DC / AC (kV)	Height	Dimensions (mm)			
							Amin	Amax	Ø B	C
SA668100	TEP1	2000	50	40	8	160	-	-	M12	65
SA669900	TEP2	2000	50	40	8	220/320	220	320	-	-

Ultimate strength tolerance ±10%