

TECHNICAL CHARACTERISTICS

Series of bushing insulators designed to be used as elements of electrical connection between the internal and external parts of the equipment. Available in red and black, they differ for the terminal element for the electrical connection of the leads, which is a nut element.

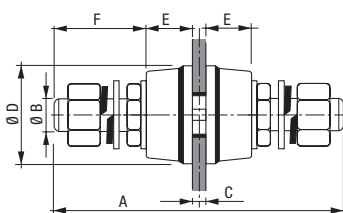
The insulator consists of two insulating parts, easily plugged together, made of polyester or polyamide resin with glass fibres and locked by a rod that also acts as a conducting element between the parts, by means of two nuts. For models up to 80 A one of the nuts is integral with the rod and made of brass. For superior currents, rods and nuts are made of zinc coated soft iron. The particular construction of the insulating parts and the rod allows the leads (fastened to the rod by zinc-chromium plated steel nuts) to be connected and disconnected both by one part or the other of the bushing insulator without turn or unlock the insulator from the mounting.



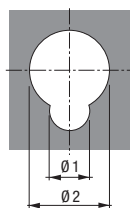
- Standard colour: red RAL-3002
A different colour can be provided for large orders.
- Arc resistance: > 180 s - ASTM D-495
- Material: self-extinguishing in class V0 (1.6 mm) according to the UL-94 standard
- Operating temperature: -40 °C ÷ +130 °C
- Water absorption: < 0.2% - ASTM D-570
- Tracking resistance: 3 W/min - ASTM D-2302

DIMENSIONS (mm)

Normal IPN bushing insulator



Drill gauge



SELECTABLE ELEMENTS

Code	Model	Material	Colour	Rated current capacity (A)	Operating voltage (V)	Test voltage (kV)	Dimensions (mm)							
							A	Ø B	C	Ø D	E	F	Ø 1	Ø 2
SA688900	IPN 025	Integral brass nut and pin	red	25	600	4	50	M4	3	15.5	10	12.5	2.5	8.5
SA689700	IPN 050	Integral brass nut and pin	red	50	1000	6	65	M6	5	20	12	17	3.5	12.5
SA690500	IPN 080	Integral brass nut and pin	red	80	1000	6	80	M8	5	25	13.5	21	3.5	15.5
SA691300	IPN 120	Zinc coated soft iron	red	120	1000	6	95	M10	5	30	15	28	4.5	17.5
SA692100	IPN 200	Zinc coated soft iron	red	200	1000	6	105	M12	5	35	17	29	5	20.5
SA693900	IPN 300	Zinc coated soft iron	red	300	2000	8	135	M16	7	43	22	38	5.5	25.5
SA694700	IPN 450	Zinc coated soft iron	red	450	2000	8	155	M20	8	54	25	44	6	30.5