

Accessories for installation

Fairleads with membrane

The membrane can be drilled according to the cable diameter, in this case good dust seal is guaranteed. The presence of the membrane allows to use the fairlead also as cap to close the sheets holes.

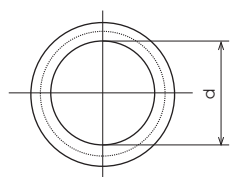
- Material: PVC
- Continuous operating temperature: 60°C
- Temperature of torsional stiffening: -52,5°C
- Colour: black



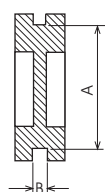
TECHNICAL INFORMATION

DIMENSIONS (mm)

Front view



Side view



| Code | Model | Hole diameter (A) for mounting (mm) | Hole diameter (d) cable passage (mm) | Sheet thickness (B) (mm) |
|----------|-------|--|---|--------------------------|
| SA782000 | 80709 | 13 | 8.5 | 2 |
| SA783800 | 80711 | 15.5 | 10.5 | 2 |
| SA784600 | 80714 | 19 | 14 | 2 |
| SA785300 | 80715 | 20.5 | 15 | 2 |
| SA786100 | 80718 | 23 | 18 | 2.5 |
| SA787900 | 80722 | 28.5 | 22 | 2.5 |
| SA788700 | 80732 | 37.5 | 32 | 2.5 |
| SA789500 | 80740 | 47.5 | 40 | 2.5 |