

## Accessories for installation

The membrane can be drilled according to the cable diameter, in this case good dust seal is guaranteed. The presence of the membrane allows to use the fairlead also as cap to close the sheets holes.

## Fairleads with membrane

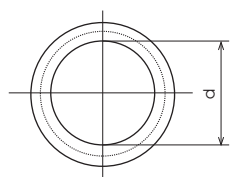
- Material: PVC
- Continuous operating temperature: 60°C
- Temperature of torsional stiffening: -52,5°C
- Colour: black



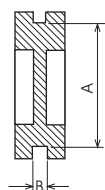
## TECHNICAL INFORMATION

### DIMENSIONS (mm)

Front view



Side view



Code	Model	Hole diameter (A) for mounting (mm)	Hole diameter (d) cable passage (mm)	Sheet thickness (B) (mm)
SA782000	80709	13	8.5	2
SA783800	80711	15.5	10.5	2
SA784600	80714	19	14	2
SA785300	80715	20.5	15	2
SA786100	80718	23	18	2.5
SA787900	80722	28.5	22	2.5
SA788700	80732	37.5	32	2.5
SA789500	80740	47.5	40	2.5