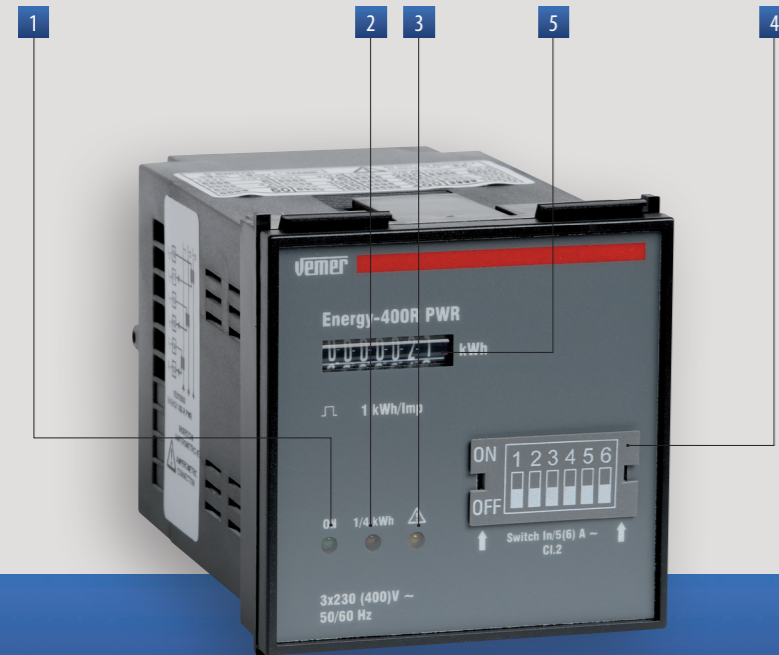


Energy meters

ENERGY-400R PWR ENERGY-400R PWRi

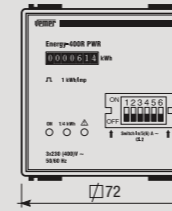
Static meters to view the consumption of active energy in 400 V three-phase systems.



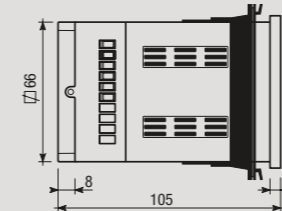
- 1 Green LED: power ON
- 2 Red LED: energy consumption
Each flash = 1/4 kWh
- 3 Yellow LED: connection error
- 4 Transformation ratio selector: the choice of the CT is by selecting the dip-switches placed under the front cover
- 5 Non zeroable mechanic numerator

DIMENSIONS (mm)

Front view

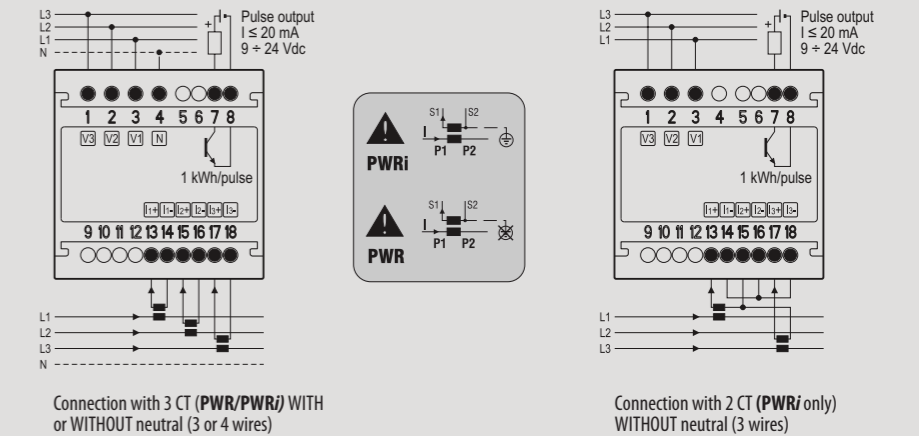


Side view



CONNECTION DIAGRAM

Diagram



MEASUREMENT AND CONTROL

TECHNICAL INFORMATION

THREE-PHASE METERS WITH CT CONNECTION

- Power supply: 3x230 phase-neutral (400 phase-phase) V AC (-15% ÷ +10%)
- Optoisolated pulse output
- Static meter to view the consumption of active energy, with amperometric connection through CT x/5A
- CT transformation ratios selectable via dip-switch, from a minimum of 5 A to 1000 A
- Possibility of connection in three-phase and three-phase + N systems
- Pulse output for PC view of the consumed energy, through specific software and relevant concentrator module
- PWRi version with electrically insulated amperometric input (the CT secondary circuit can be earthed)
- Container 72x72 mm

Note: when connecting the instrument, the transformation ratio of the CT, must correspond exactly to the ratio described above, selectable on the instrument

GENERAL CHARACTERISTICS

Power supply	V AC	3x230 (400)
Frequency	Hz	50 / 60
Electromechanic numerator		7 digits
Reading resolution	kWh	1
Precision	Active energy	Class 1 (EN 62053-21)
Absorption	Voltmetric circuit	VA <2.5
	Amperom. circuit	VA <2.5
Nominal current	A	5
Maximum current	A	6
Degree of protection	IP	20

Minimum starting current	mA	15
Optoisolated pulse output	Pulse rate	kWh 1
	Pulse duration	ms 100
	Pulse voltage	V DC 9 ÷ 24
	Output current	mA <20
Operating temperature	°C	-10 ÷ +45
Storage temperature	°C	-20 ÷ +60
Container	mm	72x72
Humidity		10 ÷ 90% non condensing

Code	Model	Description
VE010500	Energy-400R PWR	Three-phase energy meter
VE011300	Energy-400R PWRi	Insulated three-phase energy meter

REFERENCE STANDARDS

Compliance with Community Directives: 2014/35/EU (LVD) and 2014/30/EU (EMCD) is declared with reference to the following Standards: EN 61010-1 • EN 61000-6-2 / EN 61000-6-4