

# Energy meters

## ENERGY-230R TAi

### DIMENSIONS (mm)

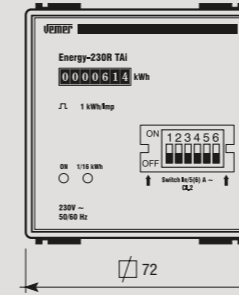
### CONNECTION DIAGRAM

Static meter sized 72x72 to view the consumption of active energy in 230 V single-phase systems. The current connection must be via external CT of the x/5 A type.

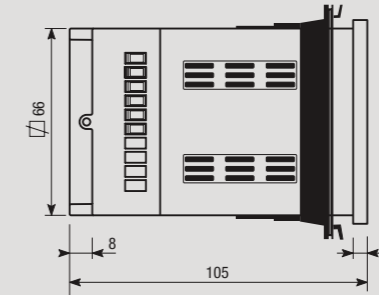


- 1 Green LED: power ON
- 2 Red "flashing" LED: active energy consumption  
Each flash = 1/16 kWh
- 3 Transformation ratio selector: the choice of the CT is by selecting the dip-switches placed under the front cover
- 4 Electromechanic numerator with 7 digits

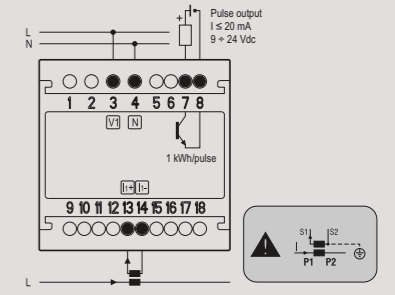
#### Front view



#### Side view



#### Diagram



## MEASUREMENT AND CONTROL

### SINGLE-PHASE METER WITH CT CONNECTION

- Power supply: 230 V (-10% ÷ +15%)
- Frequency: 50/60 Hz
- Static meter with amperometric connection through CT x/5A
- CT transformation ratios selectable via dip-switch, from a minimum of 5 A to 1000 A
- Container 72x72 mm
- Pulse output for PC view of the energy consumed, through specific software and relevant concentrator module
- Electrically insulated amperometric input (the CT secondary circuit can be earthed)

### TECHNICAL INFORMATION

#### GENERAL CHARACTERISTICS

Power supply	V AC	230 (-15 ÷ +10%)
Frequency	Hz	50 / 60
Electromechanic numerator		7 digits
Reading resolution	kWh	1
Precision	Active energy	Class 1 (EN 62053-21)
Absorption	Voltmetric circuit	VA <2.5
	Amperom. circuit	VA <2.5
Nominal current	A	5
Maximum current	A	6
Degree of protection	IP	20

Minimum starting current	mA	15
Optoisolated pulse output	Pulse rate	kWh 1
	Pulse duration	ms 100
	Pulse voltage	V DC 9 ÷ 24
	Output current	mA <20
Operating temperature	°C	-10 ÷ +45
Storage temperature	°C	-25 ÷ +60
Container	mm	72x72
Humidity		10 ÷ 90% non condensing

Code	Model	Description
VE012100	Energy 230R TAi	Insulated single-phase energy meter

#### REFERENCE STANDARDS

Compliance with Community Directives: 2014/35/EU (LVD) and 2014/30/EU (EMCD) is declared with reference to the following Standards: EN 61010-1 • EN 61000-6-2 / EN 61000-6-4