

Staircase light timers

LSM-01

DIMENSIONS (mm)

CONNECTION DIAGRAM

Electromechanical command device to operate in household environments and similar environments with normal degree of pollution.



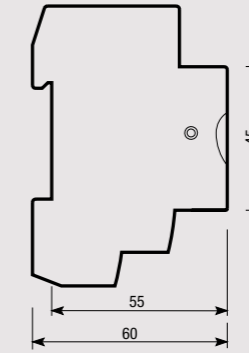
- 1 DIN-rail installation (1 DIN module)
- 2 Manual command through a two-position selector (automatic, always on)
- 3 Selector to choose the three or the four wires connection
- 4 Triggering time regulating wheel

- Timing range from 45 s to 7 min
- Current available for luminous buttons: 50 mA
- Use of the device with three or four wires connections

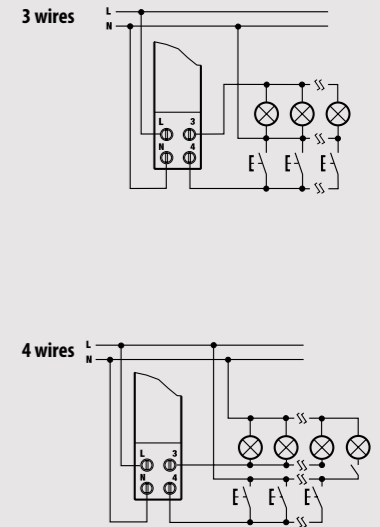
Front view



Side view



Diagram

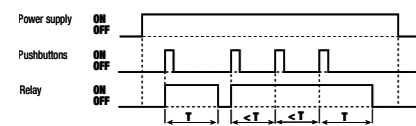


TIME AND MANAGEMENT

TECHNICAL INFORMATION

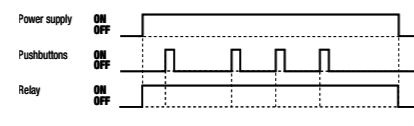
ELECTROMECHANICAL TIMER OPERATING DIAGRAMS

Automatic



- The lights turn on as soon as the button is pressed
- At the end of the "T" time the lights turn off automatically
- Simply press the button again to prolong the lighting time of another period

Staircase light fixed on



- The lights turn on as soon as the instrument is powered
- The lights remain on permanently or until the operating mode changes

GENERAL CHARACTERISTICS

| | | |
|--|------|---|
| Power supply | V AC | 230 (-10% ÷ +10%) |
| Frequency | Hz | 50 |
| Operating temperature | °C | -10 ÷ +50 |
| Timing range | | from 45 s to 7 minutes |
| Contacts capacity | | 16 A 230 V~ on resistive load 4 A 230 V~ on inductive load |
| Current available for luminous buttons | mA | 50 |
| Device class | | II |
| Degree of protection | IP | 20 |
| Container | | 1 DIN module |

CONNECTABLE LOADS

| | | |
|------------------------------|--|---------|
| Incandescent | | 3000 W |
| Fluorescent | | 1200 VA |
| Low voltage halogen | | 2000 VA |
| Halogen (230 V~) | | 3000 W |
| Low consumption (CFL) | | 1000 VA |
| Low consumption (Downlights) | | 900 VA |

| Code | Model | Description |
|----------|--------|---|
| VE073300 | LSM-01 | Automatic staircase light switch with 2 positions |

REFERENCE STANDARDS

Compliance with Community Directives: 2014/35/EU (LVD) • 2014/30/EU (EMCD) is declared with reference to the following standards: EN 60669-2-3 • EN 55014-1 • EN 55014-2