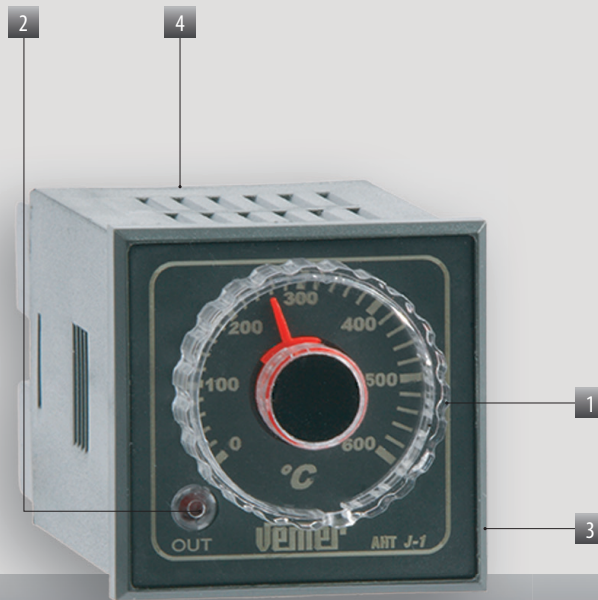


# Analog heat regulators

Series of analog heat regulators of 48x48 compact dimensions for the regulation of the temperature only in heating mode, for J and K thermocouples.

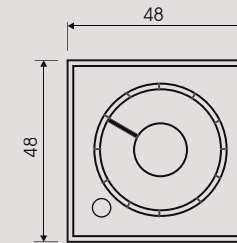


- 1 Setpoint setting knob
- 2 Red led for output status signalling
- 3 48x48 compact dimensions
- 4 6.3 mm faston terminals

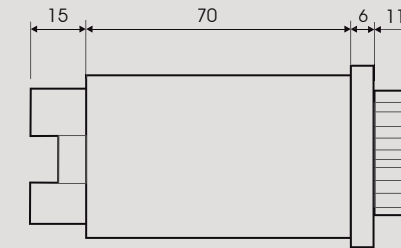
## AHT

### DIMENSIONS (mm)

#### Front view

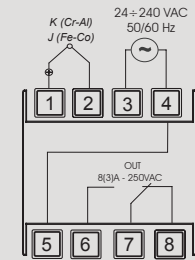


#### Side view



### CONNECTION DIAGRAM

#### Diagram



## HEAT REGULATION

### TECHNICAL INFORMATION

#### 48X48 ANALOG HEAT REGULATORS

- Power supply: 24÷240 Vac 50/60 Hz
- 6.3 mm faston terminal block for the connection of power supply and output
- Regulation type: ON/OFF (with microprocessor)
- Relay output with 8 A / 250 Vac change-over contact
- Led for output intervention signalling
- 10 °C setpoint centered hysteresis
- Output activation delay: 3 seconds
- Connecting probes:  
J (Fe-Co) for AHT-J  
K (Cr-Al) for AHT-K



#### GENERAL CHARACTERISTICS

Power supply	Vac	24 ÷ 240 (±10%)
Frequency	Hz	50/60
Absorption	VA	~3
Termination		6.3 mm faston terminals
Regulation type		ON/OFF
Output:		1 relay with change-over contact 8(3) A / 250 Vac
Measurement scale:	- AHT J	°C 0 ÷ 600
	- AHT K	°C 0 ÷ 1200

Hysteresis (centred on the setpoint)	°C	10
Output activation delay	s	3
Precision		± 0.5% of the full scale
Weight	g	200
Operating temperature	°C	0 ÷ 50
Operating humidity	°C	30 ÷ 95% non condensing
Degree of protection		IP54

Code	Model	Description	Power supply	Relays no.
VE254900	AHT-J 1P4U	48x48 Heat regulator for Fe-Co(J) probes	24÷240 Vac	1
VE255600	AHT-K 1P4U	48x48 Heat regulator for Cr-Al(K) probes	24÷240 Vac	1

#### REFERENCE STANDARDS

Compliance with Community Directives: 2014/35/UE (LVD) and 2014/30/UE (EMCD) is declared with reference to the following Standards: • EN 61010-1 • EN 61326