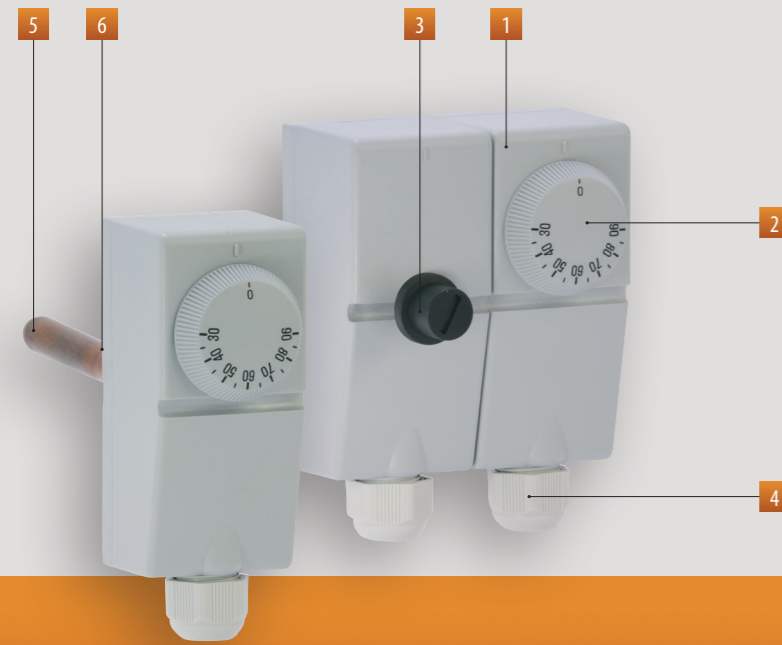


Mechanical thermostats

TIMM

DIMENSIONS (mm)

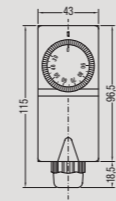
Range of immersion thermostat adapt for automatic regulation of temperature in boilers, pumps and other thermal devices.



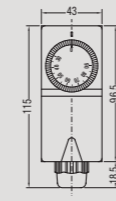
- 1 Boxed unipolar thermostat liquid expansion technology
- 2 Knob to set the temperature
- 3 Resettable push-button
- 4 Switching contacts with fairlead
- 5 Bulb
- 6 Fixed with perforated fins (TIMM-R cap) or 1/2" threaded trap

Front view

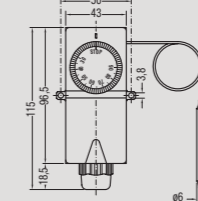
TIMM-R100



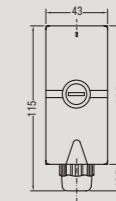
TIMM-R200



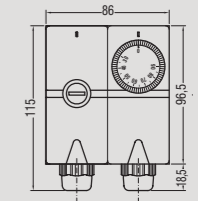
TIMM-R cap



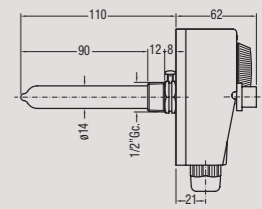
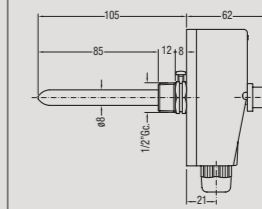
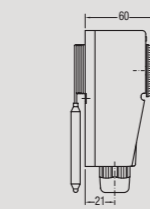
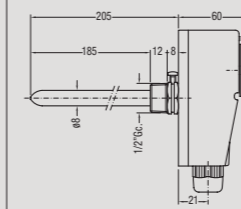
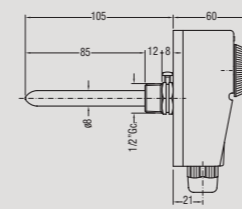
TIMM-B



TIMM-RB



Side view



CLIMATE CONTROL

THERMOSTAT FOR PIPES

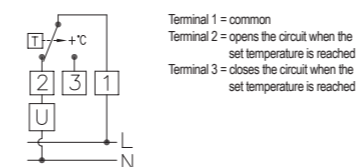
- Protection degree: IP40
- Insulation: class I
- Thermal gradient <math>< 1^\circ\text{C}/\text{min}</math>
- Maximum sheath pressure: 10 bar
- Core hitch: M20



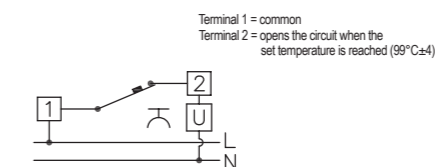
TECHNICAL INFORMATION

CONNECTION DIAGRAM

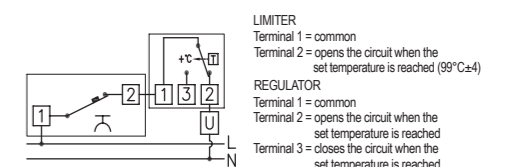
TIMM - R100 - TIMM - R200 - TIMM - R cap



TIMM - B



TIMM - RB



GENERAL CHARACTERISTICS

Model	TIMM - R100 - TIMM - R200 - TIMM - R cap			
	TIMM - B	TIMM - RB		
Temperature setting range	°C	+30 ÷ +90°C (± 3°C)	-	+30 ÷ +90°C (± 3°C)
Limiter preset temperature	°C	-	99 ± 4	99 ± 4
Differential	°C	4°C ± 2°C	-	4°C ± 2°C
Contact outputs		16 (5) A / 250 Vac	16 (5) A / 250 Vac	16 (5) A 250 Vac for regulator 6 (5) A 250 Vac for limiter
Maximum head temperature	°C	80	80	80
Maximum bulb temperature	°C	110	110	110

REFERENCE STANDARDS

Compliance with Community Directives: 2006/95/EC (Low Voltage) and 2004/108/EC (E.M.C.) is declared in reference to the following Standards: • EN 60730-1 and EN 60730-2-9

Code	Model	Description
VE305900	TIMM - R100	Adjustable thermostat 30/90°C L100 mm
VE306700	TIMM - R200	Adjustable thermostat 30/90°C L200 mm
VE307500	TIMM - R cap	Adjustable thermostat 30/90°C with external capillary L1000 mm
VE308300	TIMM - B	Resettable thermostat L100 mm
VE309100	TIMM - RB	Double adjustable thermostat 30/90°C + limiter L 100 mm