

Energy meters

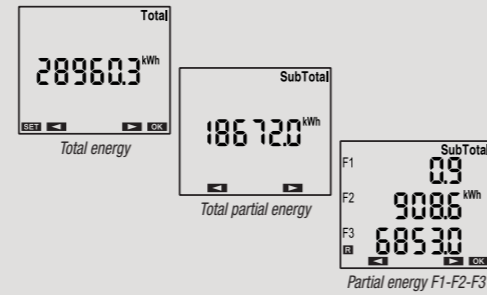
ENERGY-230 MULTI

DIMENSIONS (mm)

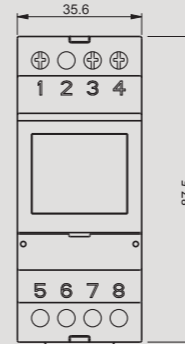
CONNECTION DIAGRAM

DIN-rail mounting single-phase energy meter designed to display the consumption of active energy divided into time-slots. The direct connection is max. 40A. The device also displays the consumptions of the total energy, of the total partial energy and of partial energy for each time-slot.

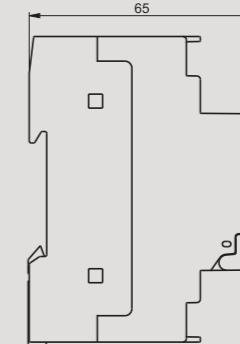
- 1 Wide display for displaying of measured consumptions, divided into time bands
- 2 Keyboard for parameters setting and to scroll the various menu pages
- 3 Energy metering indication led (1 flash = 10 Wh) or incorrect connection signalling
- 4 Terminals for the connection of power supply and of load



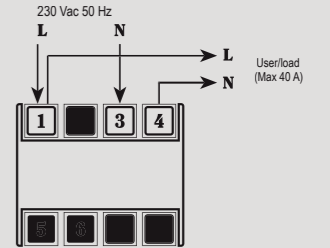
Front view



Side view



Diagram



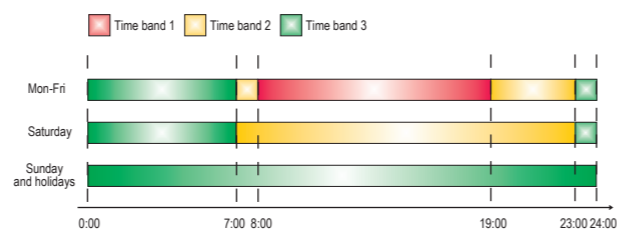
MEASUREMENT AND CONTROL

TECHNICAL INFORMATION

DIRECT CONNECTION SINGLE-PHASE METER

- Power supply 230 Vac (-15% ÷ +10%) 50/60 Hz
- Display for the view of the total consumed energy, of partials for each time band, date and time and cost, for each time band, of consumed energy (if the unit value has been inserted)
- Total not resettable counter (full scale 99999.99)
- Total partial counter (resettable) more 3 partial counters for 3 time bands
- Direct connection max 40 A
- 2 DIN modules format
- Password protected lock keypad
- Precision: class B
- Sealable cover
- Sealable block cover (cover included in the package)

Division of time bands as established by the authority for electricity



GENERAL CHARACTERISTICS

Power supply	Vac	230 (-15 ÷ +10%)
Frequency	Hz	50/60
Absorption	VA	5
Starting current I _{st}	mA	20
Minimum current I _{min}	A	0.25
Nominal current I _{ref}	A	5
Maximum current I _{max}	A	40
Signalling led		Green = powered Red = flashing with frequency 10 Wh
Precision		Class B

Current circuit power consumption	VA	< 4
Total energy resolution	kWh	0.1
Partial energy resolution	kWh	0.1
Operating temperature	°C	-10 ÷ +45
Storage temperature	°C	-25 ÷ +70
Humidity		10 ÷ 90% non condensing
Container		2 DIN modules
Protection degree		IP20 / 51 Frontal

Code	Model	Description	Dimensions
VE429700	Energy-230 Multi	Active single-phase energy meter to multi-times pricing	2 DIN modules

REFERENCE STANDARDS

Compliance with Community Directives: 2014/35/EU (LVD) and 2014/30/EU (EMCD) is declared with reference to the following Standards: EN 61010-1 • EN 50470-1 • EN 50470-3 (metrological requirements)



ENERGY-230 MULTI-ENG-202310

