

Emergency lamps

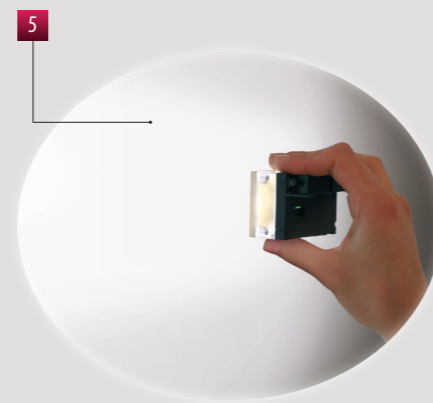
SYRIO

DIMENSIONS (mm)

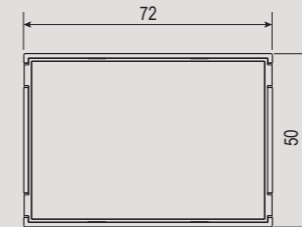
CONNECTION DIAGRAM

Flush-mounting emergency lamp that turns on in case of blackout to illuminate environments where it is installed. The lamp can be extracted and used as a portable torch; once extracted, the lamp will automatically turn on.
The switching on of the lamp during the blackout is guaranteed by two rechargeable batteries that can be easily removed and replaced once exhausted.

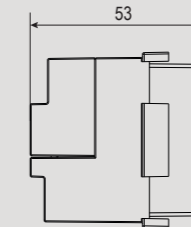
- 1 Installation in flush-mounting 3 modules box
- 2 Terminals on the back of the device for power connection
- 3 Light source guaranteed by 3 leds
- 4 Red led for depleted batteries indication
- 5 Extractable lamp with push-push mechanism: once extracted it can be used as a portable torch



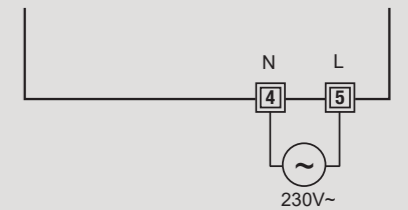
Front view



Side view



Diagram



COMPLEMENTS FOR CIVIL SERIES

TECHNICAL INFORMATION

EXTRACTABLE EMERGENCY LAMP

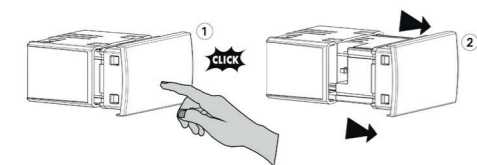
- Light source :3 white leds with a 5 mm diameter and 10000 mcd
- Backup battery:
 - 2 rechargeable batteries NiMH AAA type 1.2V 650 mAh*
 - full-charge time: 48 hours
 - (*) you can use batteries with higher capacity: in this case a longer time is required to recharge.
- Battery life in the absence of electrical network: about 2 hours (with 650 mAh batteries)
- Supports that allow adaptability with the main civil series (see "Adaptable plates") included in the package
- How to extract the lamp
 - ① press the lamp until you hear a "click"
 - ② pull the lamp and extract it

Adjustable plates

- | | |
|-----------------------------|--------------------------------|
| ABB Chiara series | Bticino Livinglight Air series |
| ABB Mylos series | Bticino Matix series |
| Ave S44 series | Gewiss Chorus series |
| Bticino Axolute series | Vimar Eikon series |
| Bticino Axolute Air series* | Vimar Eikon Evo series |
| Bticino Light series | Vimar Idea series |
| Bticino Light tech series | Vimar Plana series |
| Bticino Living series | Vimar Arké series |
| Bticino Livinglight series | |

* by suitableer Axo Air (code VE767500) you can buy separately

For information about the possibility to use different plates contact the technical assistance



GENERAL CHARACTERISTICS

Power supply	V AC	230 (-15% ÷ +10%)
Frequency	Hz	50/60
Absorption	VA (W)	1.8 (1.5)
Mounting		flush
Maximum cables section	mm ²	1.5
Light source		
Light intensity	lm	20
LED diameter	mm	5
Emission angle		15°
Backup battery (replaceable) AAA type		
Full charging time	h	48
Autonomy	h	2
Operating temperature	°C	0 ÷ 40
Storage temperature	°C	-20 ÷ 40
Operating humidity	RH	20% ÷ 90%
		non condensing
Protection degree		IP40

REFERENCE STANDARDS

Compliance with Community Directives: 2014/35/EU (LVD) and 2014/30/EU (EMCD) is declared with reference to the following standards: EN 60598-1 • EN 60598-2-2 • EN 61000-6-1 • EN 61000-6-3

Code	Model	Description	Colour	Power supply
VE511200	Syrío	Flush-mounting emergency lamp	Opal white	230 V~



SYRIO-ENG-062020

