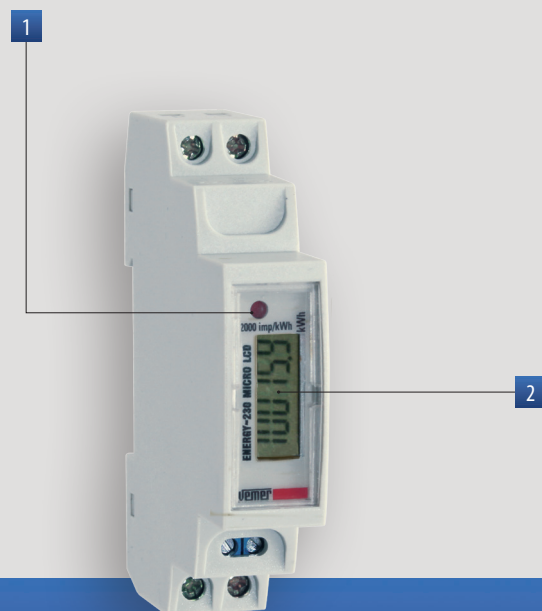


Energy meters

ENERGY-230 MICRO LCD

Static energy meter to view the consumption of active energy in 230 V AC single-phase systems.



- 1 "Flashing" Red Led:
active energy consumption
2000 flashes every kWh
- 2 Non zeroable total energy meter

DIRECT CONNECTION SINGLE-PHASE METERS

- Power supply: 230 V AC (-15% ÷ +10%)
- Fastening: DIN rail
- Class 1 index
- Static meter with direct connection max 25 A
- Electromechanic numerator with 5 digits + decimal
- Active energy consumption indication 2000 flashes every kWh
- 1 DIN module format
- Optoisolated pulse output

Code	Model	Description
VE758400	Energy-230 Micro LCD	Active single-phase energy meter with LCD



GENERAL CHARACTERISTICS

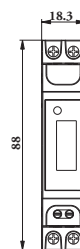
Power supply	V AC	230 (-15 ÷ +10%)	
Frequency	Hz	50 / 60	
Reading resolution	kWh	0.1	
Precision		Class 1 (EN 62053-21)	
Absorption	VA	0.5	
Base current	A	5	
Maximum current	A	25	
Starting current	mA	15	
Optoisolated pulse output	- pulse weight	2000 imp/kWh	
	- pulse duration	ms	30
	- pulse voltage	VDC	18 ÷ 27
	- maximum current	mA	<27
Operating temperature	°C	-20 ÷ +50	
Storage temperature	°C	-25 ÷ +70	
Average relative humidity		20 ÷ 90% n.c.	
Degree of protection		IP20	

REFERENCE STANDARDS

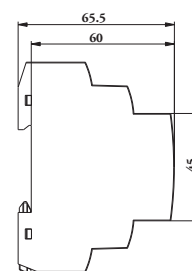
Compliance with Community Directives: 2014/35/EU (LVD) and 2014/30/EU (EMCD) is declared in reference to the following Standards: EN 61010-1 • EN 61000-6-2 and EN 61000-6-4

DIMENSIONS (mm)

Front view



Side view



CONNECTION DIAGRAM

