

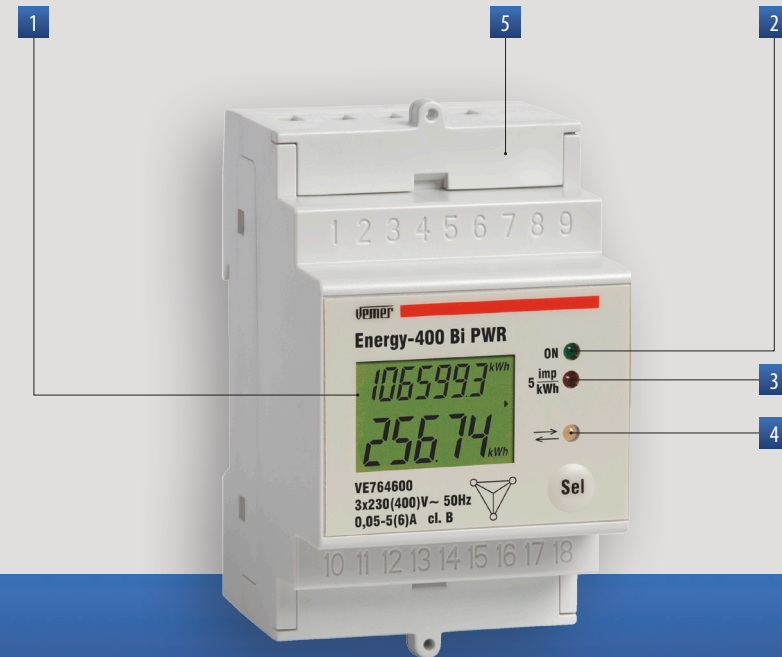
# Energy meters

## ENERGY-400 Bi PWR

### DIMENSIONS (mm)

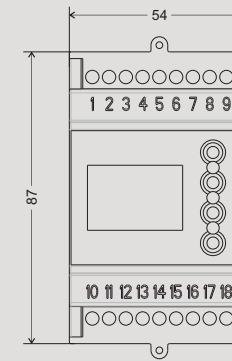
### CONNECTION DIAGRAM

Active energy meters for 400 Vac three-phase systems designed to read both withdrawn energy and injected energy in the network.

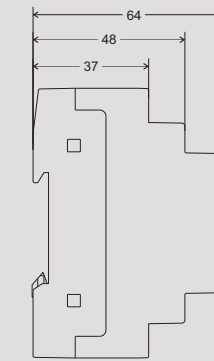


- 1 Backlit display to view the measured consumption
- 2 Green LED: power
- 3 Red LED: energy counting with constant 1/5 kWh
- 4 Yellow LED: ON indicates the energy injected in the network (production from photovoltaic system)
- 5 Selectable cover terminal blocks

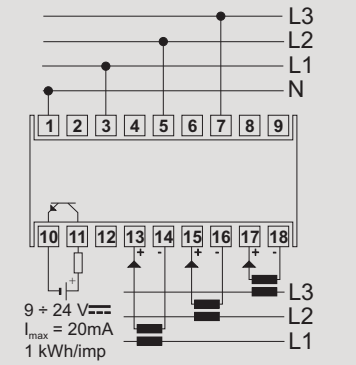
#### Front view



#### Side view



#### Diagram



## MEASUREMENT AND CONTROL

### THREE-PHASE METERS WITH CT CONNECTION FOR INJECTED AND WITHDRAWN ENERGY

- Power supply: 3x230 phase-neutral (400 phase-phase) V AC
- Static meter to read the consumption of injected active energy (self-produced for example by your own photovoltaic system) and withdrawn
- Independent meters for total and partial withdrawn energy, total and partial injected energy, instantaneous power and power factor
- Amperometric connection through CT x/5 A
- Ratios of CT transformation selectable from 5/5 A to 2500/5 A
- Possibility of connection in three-phase and three-phase + N systems
- Optoisolated pulse output for PC view of the consumed energy through specific software and relevant concentrator module
- LCD display with 7 + 5 digits
- Sealable cover terminal blocks (included in the package)
- Precision: class B
- Container: 3 DIN modules

Note: when connecting the instrument, the transformation ratio of the CT must correspond exactly to the ratio described above, selectable on the instrument.

### TECHNICAL INFORMATION

#### GENERAL CHARACTERISTICS

Power supply	V AC	3x230 (400)	
Frequency	Hz	50 / 60	
LCD numerator		7 + 5 digits	
Total energy resolution	kWh	1	
Partial energy resolution	kWh	0.01	
Precision		Class B	
Power consumption	Voltmetric circuit	VA	<2.5
	Amperom. circuit	VA	<2.5
Nominal current	A	5	
Maximum current	A	6	

Minimum starting current		mA	<10
Optoisolated pulse output	Pulse rate	kWh	1
	Pulse duration	ms	100
	Pulse voltage	V DC	9 ÷ 24
	Output current	mA	<20
Operating temperature		°C	-10 ÷ +45
Storage temperature		°C	-25 ÷ +70
Humidity			10 ÷ 90% noncondensing
Container			3 DIN modules
Protection degree			IP20 / 51 on the frontal

Code	Model	Description	Dimensions
VE764600	Energy-400 Bi PWR	Active energy three-phase meter with pulse output	3 DIN modules

#### REFERENCE STANDARDS

Compliance with Community Directives: 2014/35/EU (LVD) and 2014/30/EU (EMCD) is declared with reference to the following Standards: EN 61010-1 • EN 50470-1 and EN 50470-3



ENERGY-400 Bi PWR\_201704

