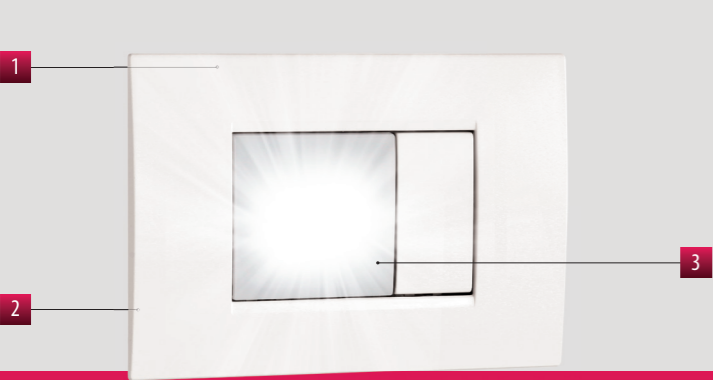
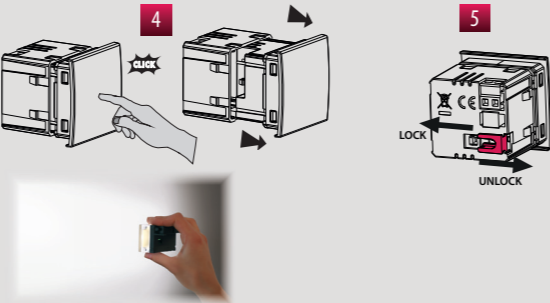


Emergency lamps

Flush-mounting emergency lamp that lights up in case of blackout to illuminate the environments where it is installed. The lamp can be extracted and used as a portable torch; once extracted, it turns on automatically. The extraction of the lamp can be limited by means of a special locking slide on the back of the device, useful in public environments to prevent its removal by unauthorized persons. Orion can be installed with discretion in flush-mounting boxes and is supplied with adapters that allow it to be installed with the plates of the main civil series.



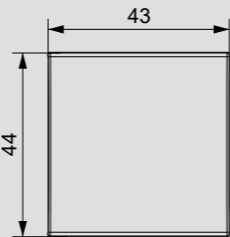
- 1 Installation in flush-mounting box with a height of 45 mm
- 2 Terminals on the back of the device for power supply connection
- 3 Red led for low battery indication
- 4 Extractable lamp with push-push mechanism (if not previously blocked): once extracted it can be used as a portable torch
- 5 Lamp locking system useful to avoid tampering in public environments. Place the locking slide to the left to prevent the lamp from being extracted (LOCK) or to the right to allow it (UNLOCK)



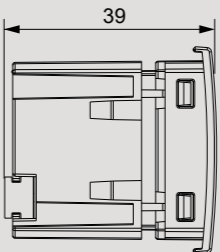
ORION

DIMENSIONS (mm)

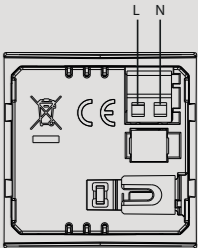
Front view



Side view



Diagram



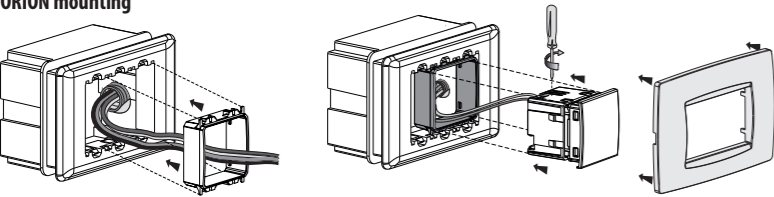
COMPLEMENTS FOR CIVIL SERIES

TECHNICAL INFORMATION

EXTRACTABLE EMERGENCY LAMP

- Light source: 1 white led
- Backup battery:
 - 1 3.6V NiMH rechargeable battery 140 mAh (not replaceable)
 - full-charge time: 48 hours
- Operating autonomy: approximately 2 hours
- Compact size: only 2 modules occupied in the flush-mounting box
- Adapters that allow adaptability with the main civil series (see "Adaptable plates") included in the package
- Lamp locking system in the back shell
- Lamp extraction method of push-push type (if not previously blocked)

ORION mounting



Code	Model	Description	Color	Power supply
VE771300	Orion	Emergency lamp with compact size**	Opal white	230 V~
VE771301	Orion-INT	Emergency lamp with compact size**	Opal white	230 V~

** Choose the model according to the plate to be adapted

Adaptable plates (for code VE771300)

ABB Mylos series	Bticino LivingLight Air series
Ave S44 series	Bticino Matix series
Bticino Axolute series	Gewiss Chorus series
Bticino Axolute Air series	Vimar Arké series
Bticino Light series	Vimar Eikon series
Bticino Living International series	Vimar Eikon Evo series
Bticino LivingLight series (LL)	Vimar Plana series
Bticino Living Now series*	

*with mounting kit (see accessories page)

GENERAL CHARACTERISTICS

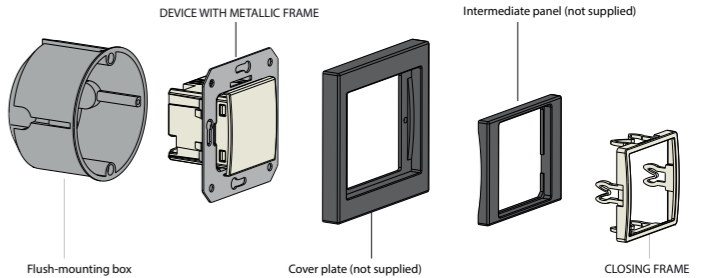
Power supply	V AC	230 (-15% ÷ +10%)	Backup battery		
Frequency	Hz	50/60	Full-charge time	h	48
Absorption	VA (W)	3 (0.2)	Service time	h	2
Mounting		flush	Operating temperature	°C	0 ÷ 50
Maximum cables section	mm²	1.5	Storage temperature	°C	-20 ÷ 50
Light source			Operating humidity	RH	20% ÷ 90%
Light intensity	lm	20			non condensing
Emission angle		120°	Protection degree		IP40

Adaptable plates (for code VE771301)

The device can be adapted to the cover plates of Berker, Busch-Jaeger, Gira, Jung and Merten.

The complete list of compatible covers plates is available on the website www.vemer.it on the product page.

ORION-INT mounting



REFERENCE STANDARDS

Compliance with Community Directives: 2014/35/EU (LVD) and 2014/30/EU (EMCD) is declared with reference to the following standards: • EN 60598-1 • EN 60598-2-2 • EN 61000-6-1 • EN 61000-6-3