

# Digital chronothermostats

## KIROS

### DIMENSIONS (mm)

### WIRING DIAGRAM

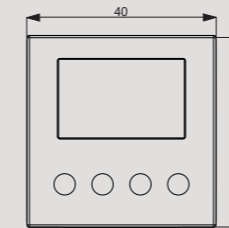
Electronic chronothermostats with weekly programming, backlit display and installation on flush-mounting boxes, with overall dimensions of only 2 modules, designed to control the ambient temperature both in heating (winter) and in cooling (summer).



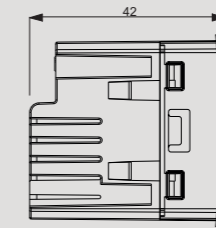
- 1 Installation on flush-mounting rectangular boxes with height 45 mm or round ones with a diameter of 60 mm
- 2 Supports supplied to adapt the device to the plates of the main civil series
- 3 Backlit display to view the measured temperature and the set programming
- 4 Terminals on the back of the device for connecting the load and the power supply
- 5 Front panels included in the package depending on the model:
  - Kiros and Kiros-INT white and anthracite gray fronts
  - Kiros.NOW for BTicino Living Now white, black and sand front panels



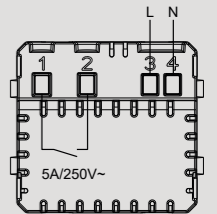
#### Front view



#### Side view



#### Diagram



## CLIMATE CONTROL

### TECHNICAL INFORMATION

### WEEKLY FLUSH-MOUNTING CHRONOTHERMOSTATS

- Automatic programming on a weekly basis with 3 temperature levels T1, T2, T3
- On/off temperature regulation type (with adjustable differential) or proportional
- Antifreeze temperature to prevent system freezing when the device is switched off
- Display blue backlighting (deactivable)
- Timing function: keeps the function in use until the set date. When reached, the device switches from automatic to off, from manual to automatic, from off to on (manual or automatic)
- Delay function: maintains the temperature level of the previous hour for the first 15, 30 or 45 minutes of the current time
- Possibility to reduce the set temperature range (factory setting 2 ÷ 50°C)
- Automatic summer/winter time change and vice versa
- Keypad lock with password to prevent changes by unauthorized persons
- Classification according to point 6 of the Communication 2014 / C 207/02 of the European Commission: class IV

#### Adaptable plates (for code VE780000)

ABB series Mylos	Bticino series LivingLight Air
Ave series S44	Gewiss series Chorus
Bticino series Axolute	Vimar series Arké
Bticino series Axolute Air	Vimar series Eikon
Bticino series Light	Vimar series Eikon Evo
Bticino series Living International	Vimar series Plana
Bticino series LivingLight (LL)	

#### Adaptable plates (for code VE780002)

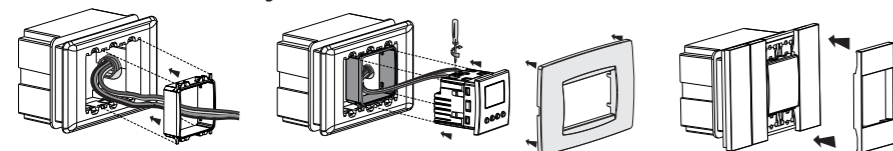
Bticino serie Living Now

### GENERAL CHARACTERISTICS

Power supply	V AC	230 (-15% ÷ +15%) 50/60Hz
Relay capacity 250 V AC	A	5
Charge reserve	h	72
Fastened		flush
Programming		weekly
Operating mode		summer/winter
Settable temperatures		3 + antifreeze + manual
Temperature setpoint range		
	Automatic °C	+2 ÷ +50
	Manual °C	+2 ÷ +50
	Antifreeze °C	OFF, +1 ÷ +50

Temperature measurement range	°C	0 ÷ +50
Measurement precision	°C	0.5
Temperature resolution	°C	0.1
Programming resolution	h	1
Gap between two measurements	s	20
Regulation type		ON-OFF or proportional
Adjustable differential (in ON-OFF)	°C	0.1 ÷ 1
Protection degree	IP	XXD
Operating temperature	°C	0 ÷ +50
Storage temperature	°C	-20°C ÷ +65°C
Relative humidity	RH	20 ÷ 90% non condensing

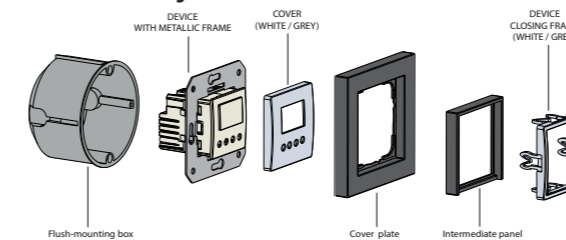
#### KIROS and KIROS.NOW mounting



Code	Model	Description	Colour	Power supply
VE780000	Kiros 230	Weekly chronothermostat with backlit LCD*	White/Grey	230 V~
VE780001	Kiros-INT	Weekly chronothermostat with backlit LCD*	White/Grey	230 V~
VE780002	Kiros.NOW	Weekly chronothermostat with backlit LCD*	White/Black/Sand	230 V~

\* Choose the model according to the plate to be adapted

#### KIROS-INT mounting



#### Adaptable plates (for code VE780001)

Il dispositivo può essere adattato alle mascherine di copertura di Berker, Busch-Jaeger, Gira, Jung e Merten

### REFERENCE STANDARDS

Compliance with Community Directives: 2014/35/EU (LVD) • 2014/30/EU (EMCD) is declared with reference to the following standards: EN 60730-2-7 • EN 60730-2-9