

Digital chronothermostats

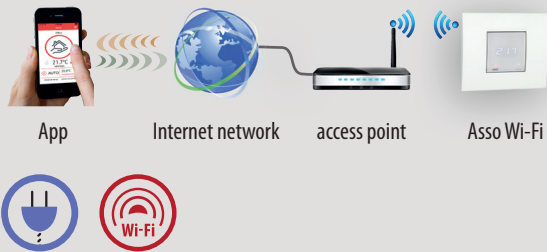
ASSO WI-FI

DIMENSIONS (mm)

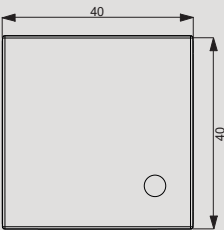
WIRING DIAGRAM

Electronic chronothermostats with Wi-Fi connection, weekly programming and installation on flush-mounting boxes with overall dimensions of only 2 modules, designed to control the ambient temperature both in heating mode (winter) and in cooling (summer). The free app, available on the AppStore and Google Play, allows the programming and the complete control from your smartphone or tablet. Any alarm situations are signaled by sending an email to the specified address.

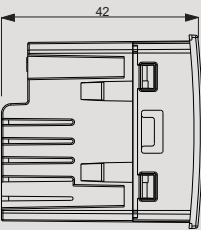
- 1 Supports supplied to adapt the device to the plates of the main civil series
- 2 White LEDs display for temperature viewing and red LED to indicate the status of the system
- 3 Terminals on the back of the device for connecting the load and the power supply
- 4 Integrated Wi-Fi module compatible with 802.11 b/g/n standard
- 5 Free app available for iOS and Android systems



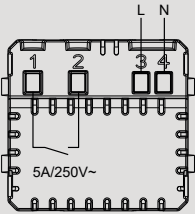
Front view



Side view



Diagram



CLIMATE CONTROL

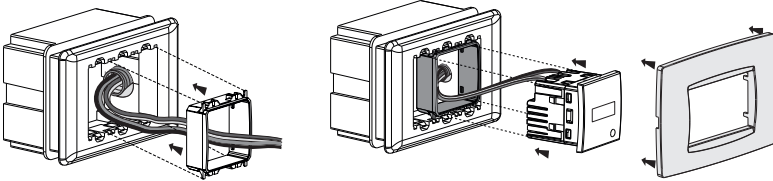
TECHNICAL INFORMATION

WEEKLY FLUSH-MOUNTING WI-FI CHRONOTHERMOSTATS

- Full programming and management via App
- Weekly programming with 3 temperature levels and On/Off or proportional regulation type
- Automatic summer time change and synchronization of date and time when connected to the Wi-Fi network
- Security functions:
 - Antifreeze temperature to prevent system freezing when the device is switched off
 - Emergency regulation with manual operation and setpoint setting using the button on the instrument in case of lack of Wi-Fi connection
 - Alarm warning (e-mail) if the measured temperature exceeds the minimum or maximum value that can be set
- Compact dimensions: only 2 modules occupied in the flush-mounting box with a height of 45 mm
- Classification according to point 6 of the Communication 2014 / C 207/02 of the European Commission: class IV

Adaptable plates (for code VE780200)	
ABB Mylos series	Bticino Livinglight Air series
Ave S44 series	Bticino Matix series
Bticino Axolute series	Gewiss Chorus series
Bticino Axolute Air series	Vimar Arke series
Bticino Light series	Vimar Eikon series
Bticino Living International series	Vimar Eikon Evo series
Bticino Livinglight series (LL)	Vimar Plana series
Bticino Living Now series*	
*with mounting kit (see accessories page)	

ASSO WI-FI mounting



Code	Model	Description	Colour	Power supply
VE780200	Asso Wi-Fi	Weekly Wi-Fi chronothermostat with LED display**	Opal white	230 V~
VE780201	Asso Wi-Fi-INT	Weekly Wi-Fi chronothermostat with LED display**	Opal white	230 V~

** Choose the model according to the plate to be adapted

GENERAL CHARACTERISTICS

Power supply	V AC	230 (-10% ÷ +10%)
Frequency	Hz	50/60
Fastened		flush
Programming		weekly
Operating mode		summer/winter
Settable temperatures		3 + antifreeze + manual
Temperature setpoint range	Automatic °C	2 ÷ 50
	Manual °C	2 ÷ 50
	Antifreeze °C	OFF, 1 ÷ 50
Relay capacity 250 V AC	A	5

Adaptable plates (for code VE780201)

The device can be adapted to the cover plates of Berker, Busch-Jaeger, Gira, Jung and Merten.

The complete list of compatible covers plates is available on the website www.vemer.it on the product page.

REFERENCE STANDARDS

Compliance with Community Directives: 2014/53/EU (RED) and is declared with reference to the following standards: • EN 60730-2-7 • EN 60730-2-9 • ETSI EN 300 328 • ETSI EN 301 489-1 • ETSI EN 301 489-17

Temperature measurement range	°C	0 ÷ 50
Measurement precision	°C	0.5
Temperature resolution	°C	0.1
Programming resolution	h	1
Gap between two measurements	s	20
Regulation type		ON-OFF or proportional
Adjustable differential (in OFF-ON)	°C	0.1 ÷ 1
Protection degree	IP	XXD
Operating temperature	°C	0 ÷ 50
Storage temperature	°C	-20 ÷ 65
Relative humidity	RH	20 ÷ 90% non condensing

ASSO WI-FI-INT mounting

