

Electronic thermostats

CELO LCD

DIMENSIONS (mm)

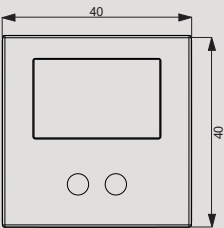
WIRING DIAGRAM

Electronic thermostat with backlit LCD display and mains power supply.
It can be mounted on rectangular or round flush-mounted boxes occupying only 2 modules.
Designed to control the temperature both in heating mode (winter) and cooling mode (summer).

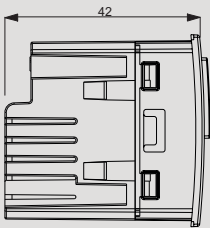


- 1 Installation in flush-mounting rectangular boxes with height 45 mm or round ones with a diameter of 60 mm
- 2 Supports supplied to adapt the device to the plates of the main civil series
- 3 Backlit display to view the measured temperature and the system status
- 4 Terminals on the back of the device for connecting the load and the power supply
- 5 Front panels included in the package depending on the model:
 - Celo LCD and Celo LCD-INT white and anthracite gray front panels, Silver available as an accessory (cod. VE780800)
 - NOW.Celo LCD for BTicino Living Now white, black and sand front panels

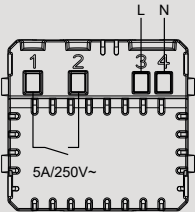
Front view



Side view



Diagram



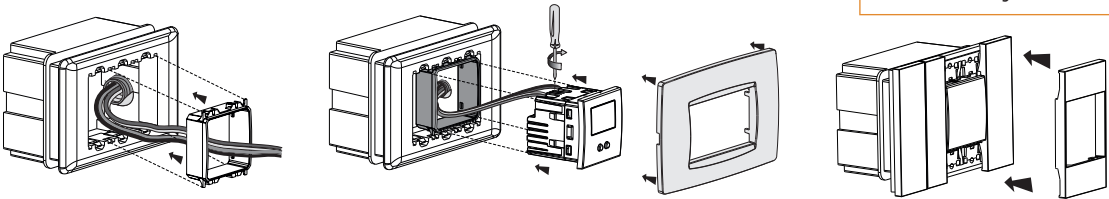
CLIMATE CONTROL

TECHNICAL INFORMATION

FLUSH-MOUNTING THERMOSTATS

- On/off type temperature regulation type (with adjustable differential) or proportional
- Antifreeze temperature to prevent system freezing when the device is switched off
- Keypad lock with password to prevent changes by unauthorized persons
- Display with blue backlighting always active (deactivable)
- Compact dimensions: only 2 modules occupied in the flush-mounting box
- Possibility to limit the range of temperature values that can be set (factory setting 2 ÷ 50 °C)
- Classification according to point 6 of the Communication 2014/C207/02 of the European Commission: class IV

CELO LCD and NOW.CELO LCD mounting



Adaptable plates (for code VE780300)

ABB series Mylos	Bticino series LivingLight Air
Ave series S44	Gewiss series Chorus
Bticino series Axolute	Vimar series Arké
Bticino series Axolute Air	Vimar series Eikon
Bticino series Light	Vimar series Eikon Evo
Bticino series Living International	Vimar series Plana
Bticino series LivingLight (LL)	

Adaptable plates (for code VE780302)

Bticino series Living Now

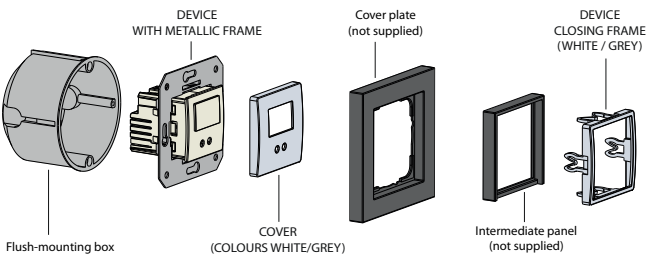
Code	Model	Description	Colour	Power supply
VE780300	Celo LCD	Thermostat with backlit LCD*	White/Grey	230 V~
VE780301	Celo LCD-INT	Thermostat with backlit LCD*	White/Grey	230 V~
VE780302	NOW.Celo LCD	Thermostat with backlit LCD*	White/Black/Sand	230 V~

* Choose the model according to the plate to be adapted

GENERAL CHARACTERISTICS

Power supply	V AC	230 (-10% ÷ +10%)
Frequency	Hz	50/60
Mounting		flush
Operating mode		summer/winter
Setpoint range	°C	2 ÷ 50
Relay capacity 250 V AC	A	5
Temperature measurement range	°C	0 ÷ +50
Measurement precision	°C	0.5

CELO LCD-INT mounting



Adaptable plates (for code VE780301)

The device can be adapted to the cover plates of Berker, Busch-Jaeger, Gira, Jung and Merten.

REFERENCE STANDARDS

Compliance with Community Directives: 2014/35/EU (LVD) • 2014/30/EU (EMCD)
is declared with reference to the following standards: EN 60730-2-9