

# Time/astronomical switches

# TEMPO

# DIMENSIONS (mm)

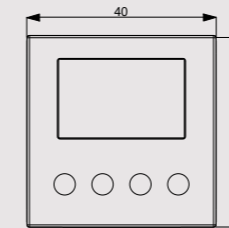
# CONNECTION DIAGRAM

Flush-mounted digital time switches for managing electrical loads over time with maximum precision. They allow a time programming, with daily or weekly frequency, or astronomical, between the sunset and sunrise times calculated by the set geographical area.

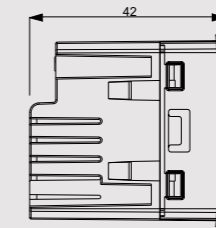


- 1 Backlit display to view date, time and relay status
- 2 Installation on rectangular flush-mounting boxes with height 45 mm or round with a diameter of 60 mm
- 3 Supports supplied to install the device with the plates of the main civil series
- 4 Terminals on the back of the device for connecting the load and the power supply
- 5 Front panels included in the package depending on the model:
  - Tempo and Tempo-INT white and anthracite gray fronts
  - NOW.Tempo for BTicino Living Now white, black and sand front panels

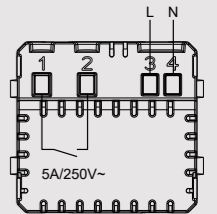
## Front view



## Side view



## Diagram



# TIME AND MANAGEMENT

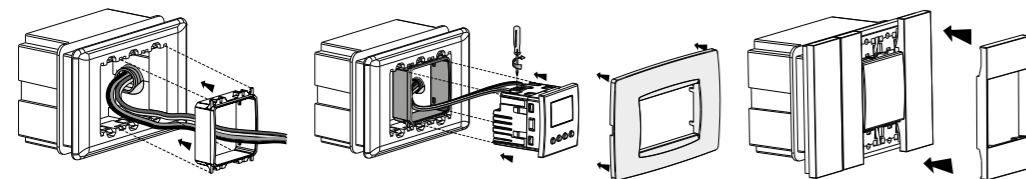
## TECHNICAL INFORMATION

## FLUSH-MOUNTING DAILY/WEEKLY SWITCHES

- Time (daily or weekly) or astronomical programming
- Programs: ON, OFF, PULSE (from 1 to 59 seconds), holidays, night (astronomical)
- Random switching function of the output
- Relay manual override (temporary or permanent)
- Automatic summer time update
- Correction of the calculated sunrise and sunset times:  $\pm 120$  minutes
- Compact dimensions: only 2 modules occupied in the flush-mounting box
- Keypad lock by password
- Menu in 5 languages: Italian, English, Spanish, German, French

Adaptable plates (for code VE787500)	
ABB series Mylos	Bticino series LivingLight Air
Ave series S44	Gewiss series Chorus
Bticino series Axolute	Vimar series Arké
Bticino series Axolute Air	Vimar series Eikon
Bticino series Light	Vimar series Eikon Evo
Bticino series Living International	Vimar series Plana
Bticino series LivingLight (LL)	
Adaptable plates (for code VE787502)	
Bticino serie Living Now	

### TEMPO e NOW.TEMPO mounting



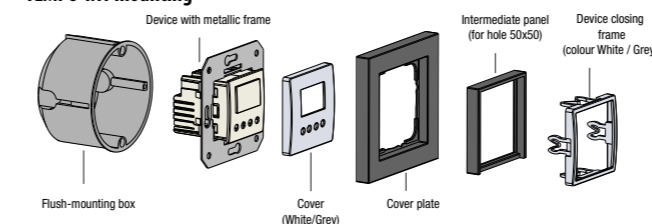
Code	Model	Description	n. relays
VE787500	Tempo	Daily/weekly time or astronomical switch for rectangular boxes *	1
VE787501	Tempo-INT	Daily/weekly time or astronomical switch for round boxes *	1
VE787502	NOW.Tempo	Daily/weekly time or astronomical switch for rectangular boxes *	1

\* Choose the model according to the plate to be adapted

## GENERAL CHARACTERISTICS

Power supply	V AC	230 (-10% ÷ +10%) 50 / 60 Hz
Power consumption	VA (W)	8 (2)
Output		1 changeover relay
Capacity at 250 V AC	A	5
Charge reserve	h	72
Programming resolution		1 minute
No. of programs (events)		120
Operating temperature	°C	0° ÷ +50
Storage temperature	°C	-10 ÷ +65
Degree of protection		IP40

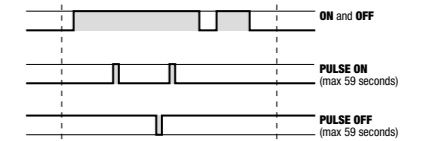
### TEMPO-INT mounting



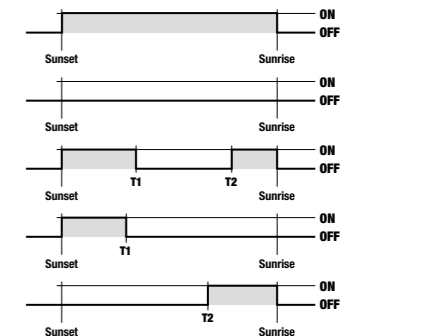
### Adaptable plates (for code VE787501)

The device can be adapted to the cover plates of Berker, Busch-Jaeger, Gira, Jung and Merten.

### Time programs



### Astronomical programs



T1 and T2 can be:  
 1. a specific time  
 2. a delay in respect at sunset (T1) or an advance respect at dawn (T2)  
 3. a pulse with a maximum duration of 59 seconds at sunset (T1) or at dawn (T2)

## REFERENCE STANDARDS

Compliance with Community Directives : 2014/35/EU (LVD), 2014/30/EU (EMCD) is declared with reference to the following standards: EN 60730-2-7