

## MODULAR TERMINALS

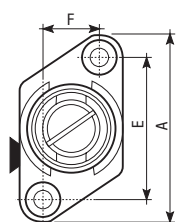
- For junction of conductors of various sections
- All measurements can be coupled with each other
- Base: polyamide, colour matte black
- Terminal: MS-58 brass
- Ring: tempered, galvanized and chrome steel
- Cap: polypropylene, orange colour
- Self-extinguishing
- Rated voltage max: 500 V
- Operating temperature:  $-40^{\circ}\text{C} \div +90^{\circ}\text{C}$



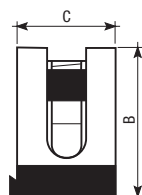
## TECHNICAL INFORMATION

### DIMENSIONS (mm)

#### Front view



#### Side view



Code	Model	Dimension				
		A	B	C	E	F
VJ70060000	S04	30	20	13	21	4
VJ70140000	S06	33	25	16	24	7
VJ70220000	S10	38	28	16	28	6
VJ70300000	S16	42	32	19	32	9
VJ70480000	S25-35	46	38	23	34	11
VJ70550000	S50	52	45	27	40	15
VJ70630000	S70	55	50	30	40	15
VJ70710000	S95-100	58	54	33	40	20

## REFERENCE STANDARDS

Conformity with Community Directives  
72/23/EEC mode from 93/68/EEC (Low Voltage)  
89/336/EEC mode from 92/31/EEC and 93/68/EEC (E.M.C.)  
is declared with reference to the following standard:  
• Safety: EN 60999