

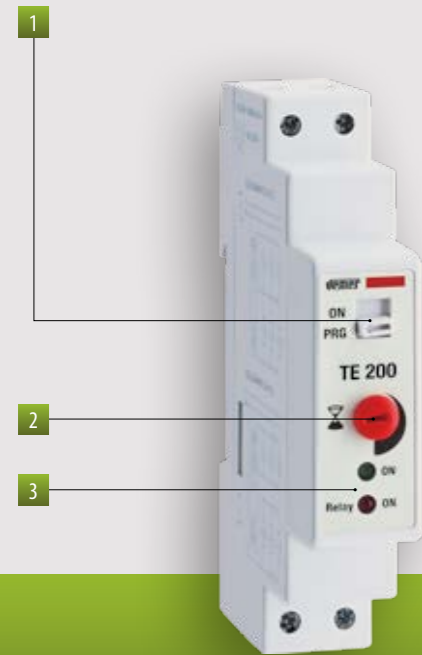
# Staircase light timers

## TE 200

### DIMENSIONS (mm)

### CONNECTION DIAGRAM

Staircase light timer to manage the permanence of lights over time in rooms such as corridors, stairs, cellars, in order to avoid useless waste of energy.

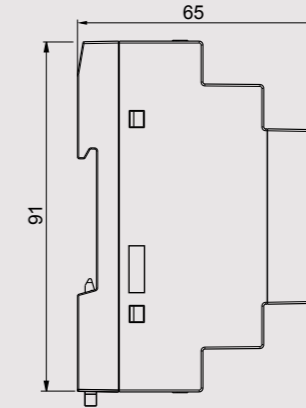


- 1 Selector for two positions operating mode:
  - always on
  - timed
- 2 Trimmer for timing setting: from 30 seconds to 20 minutes
- 3 Signaling leds:
  - green: active power supply
  - red: relay intervention

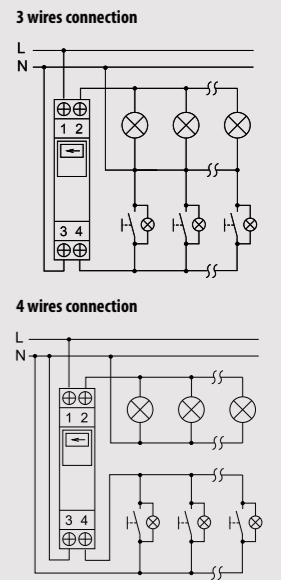
#### Front view



#### Side view



#### Diagram

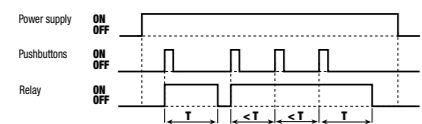


## TIME AND MANAGEMENT

### TECHNICAL INFORMATION

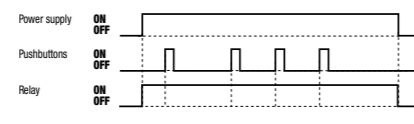
### OPERATING DIAGRAMS

#### Automatic



- The lights turn on as the button is pressed
- At the end of the "T" time the lights turn off automatically
- Simply press the button again to prolong the lighting time of another period
- The long press of the button (more than 5 seconds) forces T timing to 60 minutes.

#### Staircase light fixed on



- The lights turn on as soon as the instrument is powered
- The lights remain on permanently or until the operating mode changes

### GENERAL CHARACTERISTICS

Power supply	V AC	230 (-15% ÷ +10%)
Frequency	Hz	50 / 60
Installation on systems with:	no. of wires	3 / 4
Absorption	VA	6 (1W)
Contacts capacity at 250 V AC	A	16 (resistive load)
Max switchable voltage	V AC	400
Max switchable power	VA	4000 (resistive load)
Timing range		0.5 ÷ 20 minutes / 60 minutes
Max. number of luminous buttons		50

Signaling	Green LED	power supply
	Red LED	relay intervention
Operating temperature	°C	0 ÷ +50
Storage temperature	°C	-10 ÷ +60
Relative humidity	RH	20% ÷ 90%
		non condensing
Degree of protection	IP	20
Fastened		DIN rail
Container		1 DIN module

Code	Model	Description
VJ79720000	TE 200	Automatic staircase light timer for 3 or 4-wire systems

### REFERENCE STANDARDS

Compliance with Community Directives: 2014/35/EU (LVD) • 2014/30/EU (EMCD)  
is declared with reference to the following standards: EN 60669-2-3 • EN 61000-6-1 • EN 61000-6-3