

Electronic thermostats

CELO

DIMENSIONS (mm)

WIRING DIAGRAM

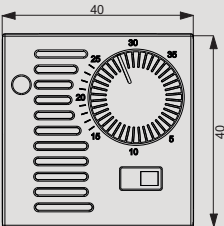
Electronic thermostat with knob for adjusting the temperature and mains power supply. It can be mounted on rectangular or round flush-mounted boxes occupying only 2 modules. Designed to control the temperature both in heating mode (winter) and cooling mode (summer).



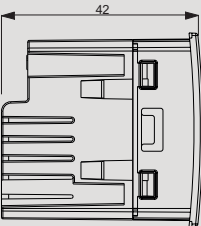
- 1 Installation in flush-mounting rectangular boxes with height 45 mm or round ones with a diameter of 60 mm
- 2 Supports supplied to adapt the device to the main wall plates
- 3 Easy knob for temperature setting
- 4 Terminal block on the back of the instrument for the connection of the load and the power supply
- 5 Front panels included in the package depending on the model:
 - Celo and Celo-INT white and anthracite gray fronts
 - NOW.Celo for BTicino Living Now white, black and sand front panels



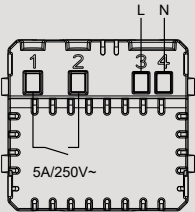
Front view



Side view



Diagram



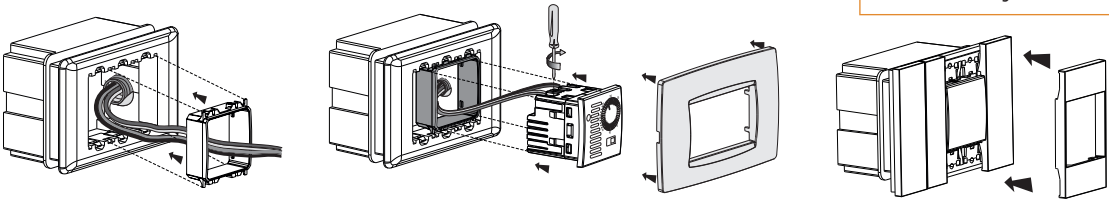
CLIMATE CONTROL

TECHNICAL INFORMATION

FLUSH-MOUNTING THERMOSTATS

- On/off or proportional temperature control
- Antifreeze temperature to prevent system freeze-ups when the device is switched off
- Compact dimensions: only 2 modules occupied in the flush-mounting box
- Classification according to point 6 of the Communication 2014/C207/02 of the European Commission: class IV

CELO and NOW.CELO mounting



Adaptable plates (for code VE789400)

ABB series Mylos	Bticino series LivingLight Air
Ave series S44	Gewiss series Chorus
Bticino series Axolute	Vimar series Arké
Bticino series Axolute Air	Vimar series Eikon
Bticino series Light	Vimar series Eikon Evo
Bticino series Living International	Vimar series Plana
Bticino series LivingLight (LL)	

Adaptable plates (for code VE789402)

Bticino series Living Now

Code	Model	Description	Colour	Power supply
VE789400	Celo	Electronic thermostat with knob*	White/Grey	230 V~
VE789401	Celo-INT	Electronic thermostat with knob*	White/Grey	230 V~
VE789402	NOW.Celo	Electronic thermostat with knob*	White/Black/Sand	230 V~

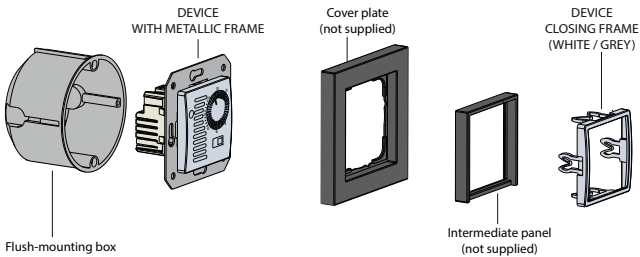
*Choose the model according to the plate to be adapted

GENERAL CHARACTERISTICS

Power supply	V AC	230 (-15% ÷ +10%)
Frequency	Hz	50/60
Mounting		flush-mounting
Operating mode		summer/winter/off
Setpoint range	°C	5 ÷ 35
Relay switching capacity at 250 V AC	A	5

Antifreeze temperature (fixed)	°C	2
Regulation type		ON-OFF or proportional
Differential (fixed)	°C	0.3
Protection degree	IP	XXD
Operating temperature	°C	0 ÷ +50
Storage temperature	°C	-20 ÷ +65
Operating relative humidity	RH	20% ÷ 90% non condensing

CELO-INT mounting



Adaptable plates (for code VE789401)

The device can be adapted to the cover plates of Berker, Busch-Jaeger, Gira, Jung and Merten.

REFERENCE STANDARDS

Compliance with Community Directives: 2014/35/UE (LVD) • 2014/30/UE (EMCD) is declared with reference to the following standards: • CEI EN 60730-2-9