

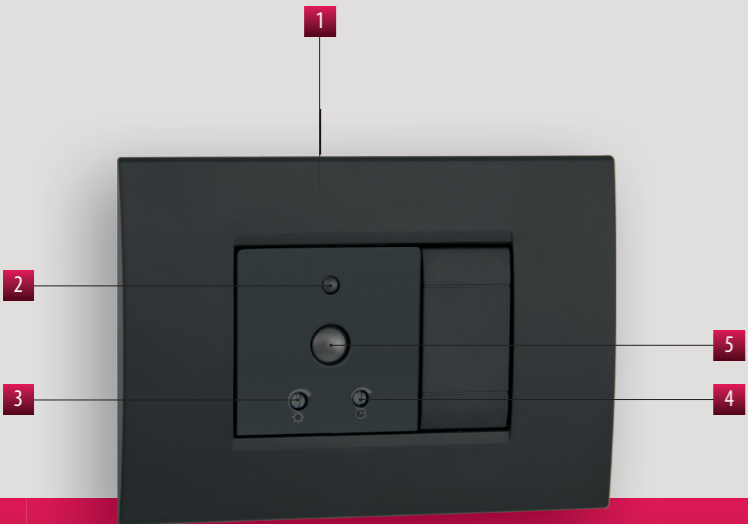
# Movement detectors

# SENS IR DUO

# DIMENSIONS (mm)

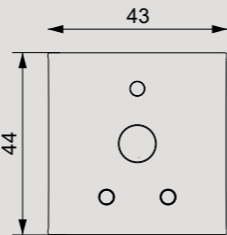
# CONNECTION DIAGRAM

Twilight movement detector that captures the movements that occur within the sensor's action field and, if necessary, activates a load such as the lighting system.  
The regulators on the front allow you to set the timing and brightness threshold below which the load is activated.  
Sens IR DUO can be installed on flush-mounted boxes of various sizes, occupying only 2 modules and adapting to the plates of the main domestic series using the supplied adapters (depending on the model).

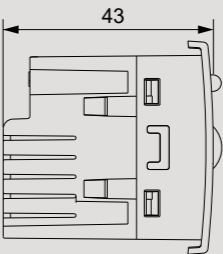


- 1 Installation on flush-mounted boxes with a height of 45 mm
- 2 Twilight sensor for brightness measurement
- 3 Trimmer for brightness adjustment (from 5 to 100 lux)
- 4 Trimmer for timing adjustment (from 30 seconds to 15 minutes)
- 5 Motion sensor

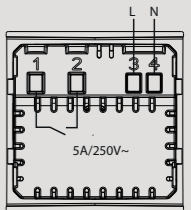
## Front view



## Side view



## Diagram



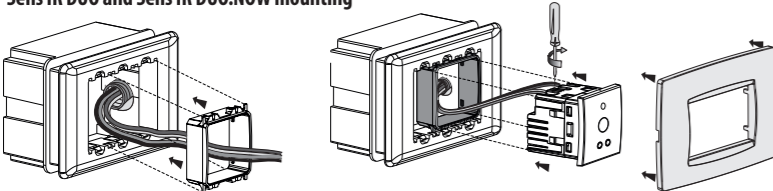
# COMPLEMENTS FOR CIVIL SERIES

# TECHNICAL INFORMATION

## MOVEMENT DETECTORS

- Timing regulator: sets how long the load must remain on
- Brightness regulator: sets the brightness level below which to activate the load in the case of movement detector
- Detector test mode to verify proper operation
- Compact size: only 2 modules occupied in the flush-mounted box
- Adapters included in the package (depending on the model) that allow adaptability to the plates of the main domestic ranges (see "Adaptable plates")

### Sens IR DUO and Sens IR DUO.NOW mounting

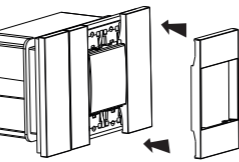


### Adaptable plates (for models Sens IR DUO)

|                                     |                                |
|-------------------------------------|--------------------------------|
| ABB series Mylos                    | Bticino series LivingLight Air |
| Ave series S44                      | Gewiss series Chorus           |
| Bticino series Axolute              | Vimar series Arké              |
| Bticino series Axolute Air          | Vimar series Eikon             |
| Bticino series Light                | Vimar series Eikon Evo         |
| Bticino series Living International | Vimar series Plana             |
| Bticino series LivingLight (LL)     |                                |

### Adaptable plates (for models SensIR DUO.NOW)

Bticino series Living Now



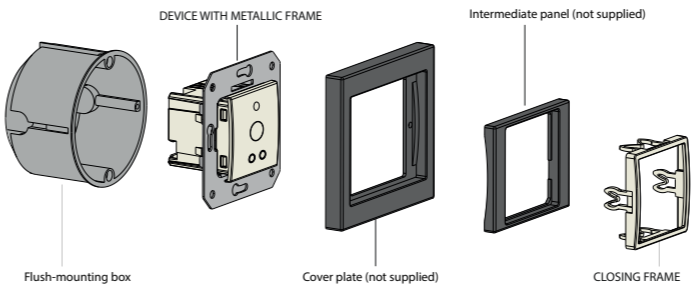
| Code     | Model                  | Description  | Color  | Power supply |
|----------|------------------------|--|--------|--------------|
| VE790900 | Sens IR DUO Argento    | Flush-mounting 2 modules motion detector with built-in twilight-sensor | Silver | 230 Vac      |
| VE791000 | Sens IR DUO Grigio     | Flush-mounting 2 modules motion detector with built-in twilight-sensor | Grey   | 230 Vac      |
| VE791100 | Sens IR DUO Bianco     | Flush-mounting 2 modules motion detector with built-in twilight-sensor | White  | 230 Vac      |
| VE793200 | Sens IR DUO.NOW Nero   | Flush-mounting 2 modules motion detector with built-in twilight-sensor | Black  | 230 Vac      |
| VE793300 | Sens IR DUO.NOW Sabbia | Flush-mounting 2 modules motion detector with built-in twilight-sensor | Sand   | 230 Vac      |
| VE791102 | Sens IR DUO.NOW Bianco | Flush-mounting 2 modules motion detector with built-in twilight-sensor | White  | 230 Vac      |
| VE791001 | Sens IR DUO-INT Grigio | Flush-mounting 2 modules motion detector with built-in twilight-sensor | Grey   | 230 Vac      |
| VE791101 | Sens IR DUO-INT Bianco | Flush-mounting 2 modules motion detector with built-in twilight-sensor | White  | 230 Vac      |

## GENERAL CHARACTERISTICS

|                        |        |              |
|------------------------|--------|--------------|
| Power supply           | Vac    | 230 (±10%)   |
| Frequency              | Hz     | 50/60        |
| Maximum absorption     | VA (W) | 5 (1)        |
| Mounting               |        | Flush-munted |
| Maximum cables section | mm²    | 1,5          |
| Output                 |        | 1 relay NO   |
| Relay capacity 250 Vac | A      | 5            |

|                         |     |                          |
|-------------------------|-----|--------------------------|
| Intervention time       |     | 30 seconds ÷ 15 minutes  |
| Intervention brightness | lux | 5 ÷ 100                  |
| Detection angle         |     | 110° at 20°C             |
| Detection range         |     | 7 meters at 20°C         |
| Operating temperature   | °C  | 0 ÷ 35                   |
| Storage temperature     | °C  | -10 ÷ 60                 |
| Operating humidity      | RH  | 20% ÷ 90% non condensing |
| Protection degree       |     | IP40 (on the front)      |

### Sens IR DUO-INT mounting



### Adaptable plates (for models Sens IR DUO-INT)

The device can be adapted to the cover plates of Berker, Busch-Jaeger, Gira, Jung and Merten.

### CONNECTABLE LOADS

|                       |  |        |
|-----------------------|--|--------|
| Incandescent          |  | 800 W  |
| Fluorescent (neon)    |  | 200 VA |
| Low voltage halogen   |  | 500 VA |
| 230 V~ halogen        |  | 800 W  |
| Low consumption (CFL) |  | 200 VA |
| Led                   |  | 200 VA |

## REFERENCE STANDARDS

Compliance with the Community Directives: 2014/35/EU (LVD) • 2014/30/EU (EMCD) is declared in reference to the following harmonized standards: • CEI EN 60669-2-1