



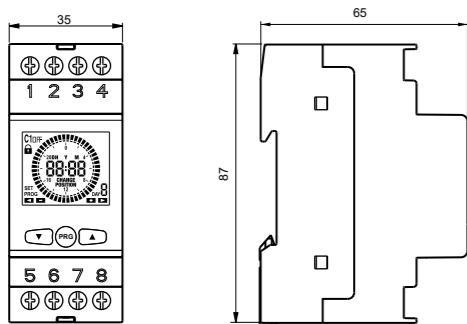
Mod. **Simply**

Vemer S.p.A.

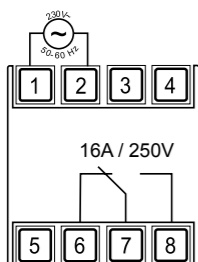
I - 32032 Feltre (BL) • Via Camp Lonc, 16
e-mail: info@vemer.it - web site: www.vemer.it



2 DIMENSIONS

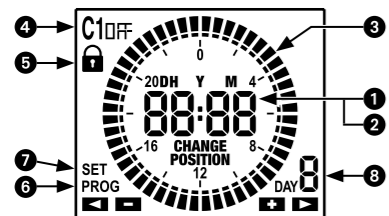


3 CONNECTION DIAGRAMS

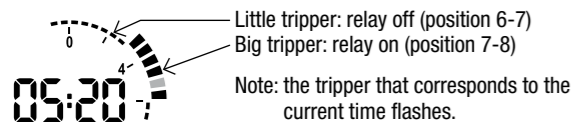


Note: the monostable relay switches only if the instrument is mains powered.

4 DISPLAY DESCRIPTION



- 1 Current time indication
- 2 Set year, month, day indication (displayed in advanced programming)
- 3 Set programming
- 4 Relay status
- 5 Switchings lock of active relay
- 6 Active programming menu (PROG)
- 7 Active advanced programming menu (SET)
- 8 Day of the week (model Simply W only)



5 INSTALLATION

The instrument comes with the inserted battery and the set date. It is possible to awaken the instrument (display activation without backlight) by pressing **PROG** key.

Connect power supply and relay output as reported in the "connection diagrams".

The backlight will turn on as soon as the instrument is powered and remains always on (in the presence of mains power).

1 User manual

DIGITAL TIME SWITCH WITH TRIPPERS

⚠ Read all instructions carefully

Electronic time switches with daily programming (**Simply D**) or weekly (**Simply W**) for control of an electrical load. Join the accuracy of digital switches to the simple programming of the electromechanical switches with trippers. The cover on the back of the instrument allows battery replacement once depleted. The switches of SIMPLY series perform actions of 1BTU type and are intended to operate in environments with III overvoltage category and pollution degree 2 in accordance with EN 60730-1 standard.

Code	Model	Description
VE512000	Simply D	Time switch with daily programming
VE513800	Simply W	Time switch with weekly programming

SAFETY WARNINGS

- During product installation and operation it is necessary to observe the following instructions:
- 1) The instrument must be installed by a qualified person, in strict compliance with the connection diagrams.
 - 2) Do not power the product if any part of it is damaged.
 - 3) The instrument must be installed and activated in compliance with current electric system standards.
 - 4) The electrical system in the building in which the instrument is to be installed should have an over-current switch and a protection device.
 - 5) Before accessing the connection terminals, verify that the leads are not live.
 - 6) After installation, inaccessibility to the connection terminals without appropriate tools must be guaranteed.
 - 7) In case of malfunction do not perform repairs and contact immediately the technical support.

TECHNICAL CHARACTERISTICS

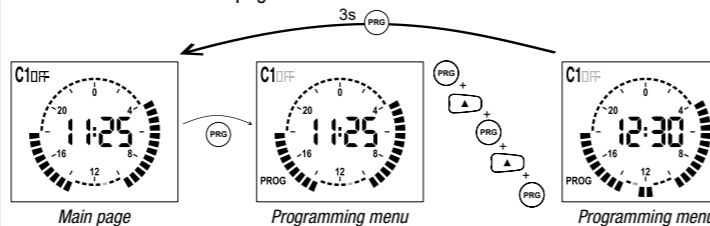
- Power supply: 230Vac (-15% ÷ +10%) 50/60Hz
- Absorption: 6VA (1W)
- Output: relay with change-over monostable contact from 16A / 250Vac
- Impulse voltage : 4 kV
- Programming: - Simply D: daily - Simply W: weekly
- Resolution of programming: 30 minutes
- Summer/winter time automatic update (removable) depending on the geographical zone of installation
- Active backlight display with mains power
- Replaceable CR2032 type backup battery (duration: 5 years about)
- Operating temperature: -20 ÷ +50 °C
- Storage temperature: -25°C ÷ +70°C
- Operating humidity: 20÷90% non condensing
- Container: 2 DIN modules
- Degree of protection: IP20
- Actions type: 1BTU
- Insulation: reinforced among accessible parts (frontal) and all other terminals

6a SIMPLY D PROGRAMMING

Simply D programming consists of a single program to be repeated every day. The program is defined by the position of 48 trippers (one every 30 minutes), which can be in the up position (relay on) or low (relay off). When you first start the trippers are all in low position (relay off).

To modify the program:

1. from the main page press **PROG** key
2. the programming starts from the tripper that corresponds to the current time
3. press the key **▲** or **▼** to set the tripper (**▲** = relay on, **▼** = relay off) and press **PROG** to confirm and step up of 30 minutes (the next tripper)
4. once the desired programming is got, press **PROG** key for at least 3 seconds to exit and return to the main page.



Note: you can exit programming even if you don't press any key within the time-out (40 seconds if the instrument is mains powered, 10 seconds if powered by the backup battery). The modifications are still saved.

Display date

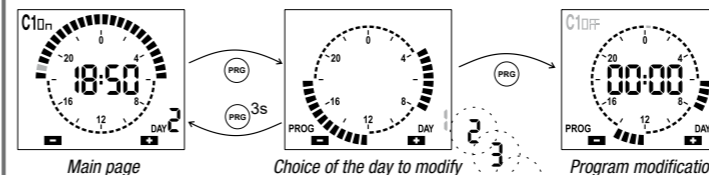
From the main page, by pressing the key **▲** it's possible to display the set date (day and month).

6b SIMPLY W PROGRAMMING

Simply W programming consists of 7 different programs, one for each day of the week. Each program is defined by the position of 48 trippers (one every 30 minutes), which can be in the up position (relay on) or low (relay off). When you first start the trippers of all programs are in the low position (relay off).

To modify the programming:

1. from the main page press **PROG** key. The day 1 (Monday) flashes
2. choose the day of the week to modify (1 = Monday, ..., 7 = Sunday) with the keys **▲** and **▼** and confirm by pressing **PROG**
3. programming starts from midnight (00:00) of the selected day
4. press the keys **▲** or **▼** to set the tripper (**▲** = relay on, **▼** = relay off) and press **PROG** to confirm and step up of 30 minutes (the next tripper)
5. once the desired programming is got for that day, press **PROG** key for at least 3 seconds to exit and return to the choice of the day
6. repeat steps 2, 3, 4, 5 until all days of the week have been programmed
7. once the desired programming is got, press **PROG** key for at least 3 seconds to exit and return to the main page



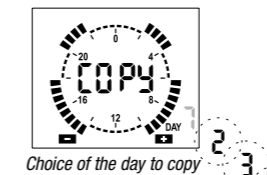
Note: you can exit programming even if you don't press any key within the time-out (40 seconds if the instrument is mains powered, 10 seconds if powered by the backup battery). The modifications are still saved.

Copy function

The copy function allows you to copy in a day any programming of another day. This allows to speed up the procedure of programming if two or more days include the same programming.

To copy an existing program in another day:

1. access modification menu of the day concerned (points 1, 2, 3 of the simple programming)
2. press simultaneously the keys **▲** and **▼**. The word **COPY** appears on the display and the day to copy flashes
3. choose which day to copy with the keys **▲** and **▼** and confirm with **PROG** key.



Displaying date and programs

From the main page, by pressing the key **▲** it's possible to display in succession the programs of every single day and then the set date (day and month). To move from one program to the next, press the key **▲**.

8 RELAY MANUAL SWITCHING

To change manually the status of relay output (from on to off or vice versa) press the **▼** key.

Attention: the status is maintained until new press of the key **▼** or until the next program switching.

To lock the current status of the relay and prevent its switchings, press for a long time (> 3 seconds) the key **▼**. In this condition the symbol **🔒** is lit. Unlocking is done by pressing for a long time the key **▼**.

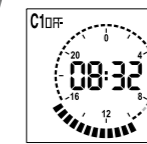
9 DEPLETED BATTERY

When the backup battery is low, the instrument displays **BALE** alternating with the main page. In this condition, replace the battery as soon as possible, by accessing the battery compartment at the back of the instrument to avoid that, in case of blackout, the date and time are lost.

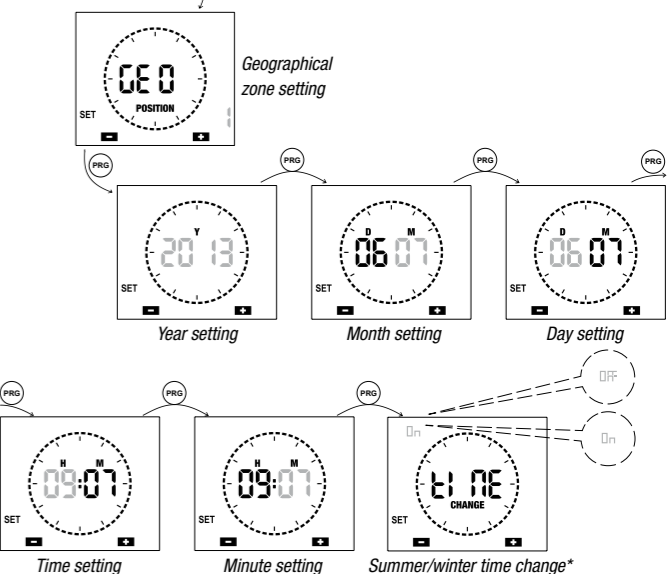
⚠ Dispose of used batteries in accordance with the current legal provisions regarding the disposal of hazardous waste.

Attention: before you access the battery compartment, disconnect the power supply. Attention: perform the operation in a maximum time of one minute in order not to lose date and time. Use only CR-2032 type battery.

7 ADVANCED PROGRAMMING



From the main screen by pressing for a long time (> 3 seconds) **PROG** key it's possible to set: geographical zone of installation, time, summertime automatic update and, for Simply W only, the operating mode (daily or weekly).



(*) summer/winter time change

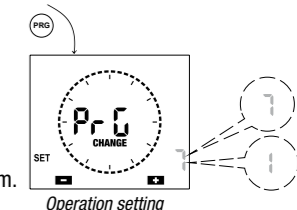
If the automatic update of summer time is active (on), the change occurs according to the set geographical zone:

Zone	Start DST (+1h)	End DST (-1h)
01 Europe	Last Sunday, March	Last Sunday, October
02 North America	Second Sunday, March	First Sunday, November
03 Australia	First Sunday, October	First Sunday, April
04 Chile	Second Sunday, October	Second Sunday, March
05 New Zealand	Last Sunday, September	First Sunday, April

Note: time change is fixed for all zones at 2:00 o'clock for the start of DST and at 3:00 o'clock for the end of DST.

Operating mode (Simply W only)

In Simply W after "summer/winter time change" menu, the menu for the operating mode choice is accessed: daily (1) or weekly (7). If set as daily, Simply W works like a Simply D, running every day the same program.



Note: you can exit programming even if you don't press any key within the time-out (40 seconds if the instrument is mains powered, 10 seconds if powered by the backup battery). In this case the modifications are not saved.

10 DEFAULT PARAMETERS

The default of the parameters shows the instrument factory conditions, that is to say: geographical zone 1 (Europe), winter time automatic change active and programming always OFF.

To perform the default, from the main screen press simultaneously for at least 3 seconds the keys **▲**, **PROG** and **▼** and, during **DEF** flashing, confirm by pressing **PROG** key.

Attention: if during **DEF** flashing you don't press any key within 5 seconds, the instrument returns to the main screen without perform the reset.

Information to users pursuant to art. 14 of the directive 2012/19 / EU of the european parliament and of the council of 4 July 2012 on waste electrical and electronic equipment (WEEE)

If the crossed-out bin symbol appears on the equipment or packaging, this means the product must not be included with other general waste at the end of its working life.

The user must take the worn product to a sorted waste center, or return it to the retailer when purchasing a new one.

Products for disposal can be consigned free of charge (without any new purchase obligation) to retailers with a sales area of at least 400 m², if they measure less than 25 cm.

An efficient sorted waste collection for the environmentally friendly disposal of the used device, or its subsequent recycling, helps avoid the potential negative effects on the environment and people's health, and encourages the re-use and/or recycling of the construction materials.

REFERENCE STANDARDS

Compliance with Community directives: 2014/35/EU (LVD), 2014/30/EU (E.M.C.D.) is declared in reference to the following harmonised standards: • EN 60730-2-7