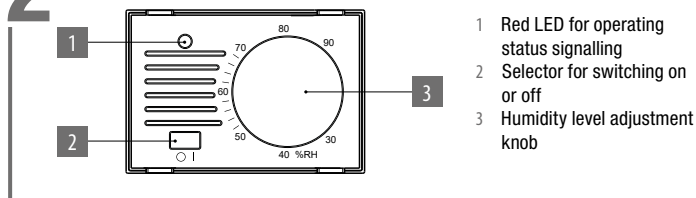




Vemer S.p.A.

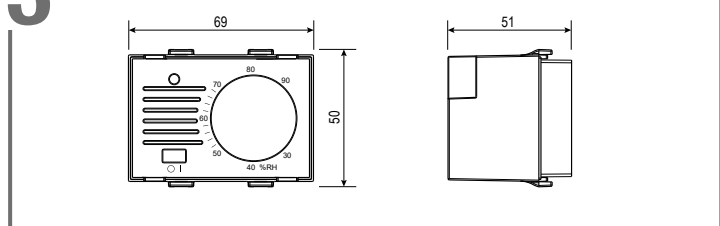
I - 32032 Feltre (BL) • Via Camp Lonc, 16
e-mail: info@vemer.it - web site: www.vemer.it

2 DESCRIPTION

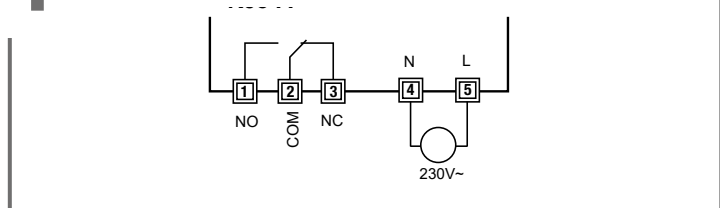


- 1 Red LED for operating status signalling
- 2 Selector for switching on or off
- 3 Humidity level adjustment knob

3 DIMENSIONS

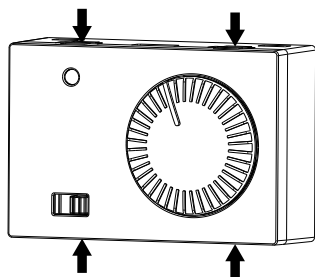


4 CONNECTION DIAGRAM



5 INSTALLATION

- Install the humidistat in a 3-module flush-mounting box (type 503) at a height of about 1.5 m above the floor in an area which respects as much as possible the average humidity conditions of the whole room. Avoid installation near doors or windows, in niches, behind doors and curtains or in positions with excess or total lack of ventilation, in order to prevent the humidity reading measured by the probe from being somewhat offset.
- The device is sold already mounted with anthracite colour. To transform it in the white version, remove the knob and the cover, acting on the hooks placed on the upper and lower side of the device and mount the cover and the white knob included in the package.



- Make the connections by respecting the diagrams described in this manual.
- Fix the device inside the 3 modules box in compliance with the assembly diagrams described on the back of this instruction sheet. The installation accessories included in the package or can be purchased separately (see BOX 7) allow for adaptability with the main domestic range.

1 User Manual

ELECTRONIC FLUSH-MOUNTING HUMIDISTAT

⚠ Read all instructions carefully

Electronic flush-mounting humidistat for installation in 3-module boxes (type 503) with mains supply. The ease of use is assured by a simple knob selector to set the desired humidity. The product is provided with frames, to make it suitable for plates of the most common domestic range, with white and anthracite grey coloured ones. Humi performs actions of 1B type and is intended to operate in environments with III overvoltage category and pollution degree 2 in accordance with EN 60730-1 standard.

Code	Model	Description
VE379400	Humi	Electronic flush-mounting humidistat 230V

SAFETY WARNINGS

During product installation and operation it is necessary to observe the following instructions:

- 1) The product must be installed by a qualified person, strictly in observance of the connection diagrams shown in this manual.
- 2) The product must be installed and activated in compliance with current electric systems standards.
- 3) After installation inaccessibility to the terminals without using dedicated tools must be guaranteed
- 4) Do not use the product for anything other than the indicated purpose.
- 5) In the supply network there must be a bipolar disconnection.
- 6) In the electrical system upstream of the product must be installed a protection device against the overcurrents.
- 7) Before accessing the connection terminals, make sure that the leads are not live.
- 8) Do not connect or feed the product if any part of it is damaged.
- 9) The product can be used in environments with Measurement Category III and Pollution degree 2, according to the Standard EN 60730-1

TECHNICAL SPECIFICATIONS

- Power supply:
 - 230 Vac (-15% ÷ +10%) 50/60 Hz
 - absorption: 4 VA (0.5 W)
- Installation on 3 modules box (503 type)
- Terminals:
 - 3 terminals for 1.5 mm² cables for bistable output relay 5 A / 250 Vac
 - 2 terminals for 1.5 mm² cables for power supply
- Output: bistable relay 5 (3) A / 250 Vac
- Minimum time between a switching and the next one: 1 minute
- Regulation type: on/off with fixed differential of ± 2.5% RH
- Regulation range: 30% ÷ 90% RH
- 2-position selector switch: always off, automatic
- Storage temperature: -10°C ÷ 60°C
- Operating humidity: 20 ÷ 90% non condensing
- Protection degree: IP40
- Insulation: reinforced among accessible parts (frontal) and all other terminals
- Mechanical locks on the knob to limit the setpoint

information to users pursuant to art. 14 of the directive 2012/19 / EU of the european parliament and of the council of 4 July 2012 on waste electrical and electronic equipment (WEEE)



If the crossed-out bin symbol appears on the equipment or packaging, this means the product must not be included with other general waste at the end of its working life.

The user must take the worn product to a sorted waste center, or return it to the retailer when purchasing a new one.

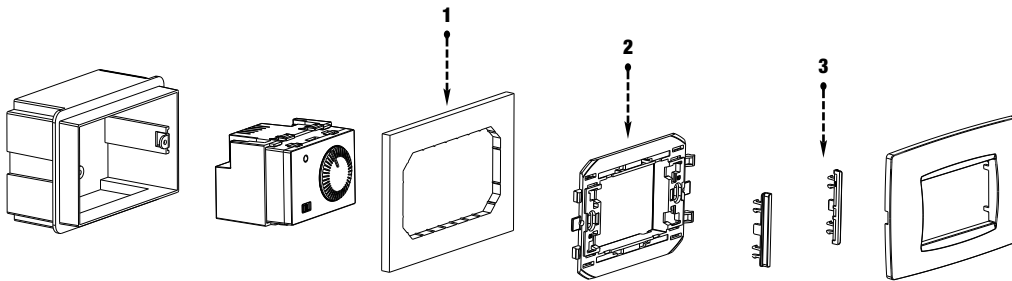
Products for disposal can be consigned free of charge (without any new purchase obligation) to retailers with a sales area of at least 400 m², if they measure less than 25 cm.

An efficient sorted waste collection for the environmentally friendly disposal of the used device, or its subsequent recycling, helps avoid the potential negative effects on the environment and people's health, and encourages the re-use and/or recycling of the construction materials.

REFERENCE STANDARDS

Conformity to the EU directives:
2014/35/EU (LVD) 2014/30/EU (EMCD)
is declared with reference to the following harmonized standard:
• EN 60730-1 • EN 60730-2-13

6 MOUNTING



Note:

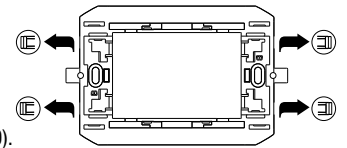
1. For installation with the BTicino Livinglight AIR series if the box extension is not present (adapter which increases the depth of the recessed box) we recommend using the Livinglight AIR installation frame.
2. Choose the adaptability frame based on the compatibility table (see BOX 7) for the domestic range.
3. Insert, if necessary, plastic elements (see BOX 7).

7 ADAPTABILITY FRAMES

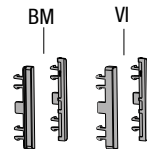
FRAMES	SERIES
A	ABB: Mylos AVE: S44 BTICINO: Living, Light, Light Tech, Livinglight, Axolute VIMAR: Eikon, Eikon Evo, Plana
B	ABB: Chiara BTICINO: Matix * GEWISS: Chorus * VIMAR: Arkè, Idea
AIR	BTICINO: Livinglight AIR
AXO AIR	BTICINO: Axolute Air **

Note:

- * remove the teeth from the frame for proper compatibility (see figure to the side).
- ** AXO AIR frame not included in the package. Available to purchase separately (code VE767500).



PLASTIC ELEMENTS



- For correct compatibility with the BTicino Matix series, use the BM plastic elements in combination with the frame B.
- For correct compatibility with the Vimar Idea series, use the VI plastic elements in combination with frame B.

8 OPERATION

Setpoint modification

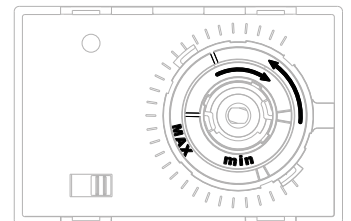
- Use the selector switch to turn on or off the humidistat:
 - position 0: humidistat off, no regulation
 - position I: humidistat switched on, active regulation for detected humidity values exceeding the set value.
- Use the knob to set the desired humidity level. It's possible to set values between 30% RH and 90% RH. When the humidity value present in the room exceeds the set value, the red LED switches on and the relay closes the contact between terminals 1-2.

Note: In order to preserve the life of the system, the minimum time between a relay switching and the next one is 1 minute. However, the led status updating is immediate. Therefore, after using the regulation knob, it is possible to find a discrepancy between what is indicated by the led and the actual status of the relay. This condition lasts for up to 1 minute.

The device has two ring nuts to limit mechanically the range of settable values if the humidistat is installed in public places or in hotel rooms.

To limit the range, proceed as follows:

- Set the knob in an intermediate value of the desired range
- Remove the knob.
- Under the knob there are two ring nuts marked by the word "min" and "MAX", respectively for the lower and upper limit.
- Turn the "min" ring nut clockwise and "MAX" anticlockwise until the minimum value range (see the humidity values reported on the cover).
- Turn the "MAX" ring nut anticlockwise and until the maximum value range (see the humidity values reported on the cover).
- Replace the knob, making sure that the indicator of the setpoint on the knob is in the same position when the knob has been removed.



To remove the limitation to the setpoint and reset the range 30% ÷ 90% RH turn the two ring nuts up to bring the locks of limitation in a position outside the range 30% ÷ 90% RH.

Error probe signal

The humidistat signals the error probe condition by blinking the led 2 times per second. In this case the regulation is inhibited and the relay contact remains between terminals 2 and 3. Contact the Technical Service.