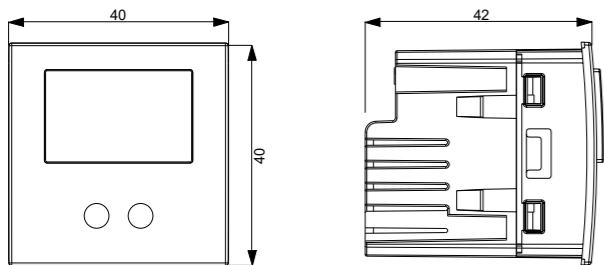




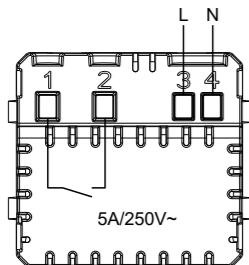
Vemer S.p.A.
I - 32032 Feltre (BL) • Via Camp Lonc, 16
e-mail: info@vemer.it - web site: www.vemer.it



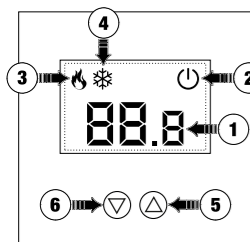
2 DIMENSIONS



3 WIRING DIAGRAMS



4 LEGEND



- ① "Environment temperature" field
- ② "Off" field
- ③ "Heating - activation" field
- ④ "Cooling - activation" field
- ⑤ Key "▲" increases the selected field
- ⑥ Key "▼" decreases the selected field

5 PLACEMENT

We recommend installing the device at a height of 1.5 meters from the floor, in an area that reflects as much as possible the average temperature conditions of the room.
Avoid installation near doors or windows, in niches, behind doors and curtains or in positions with excess or total lack of ventilation

06-2022

REFERENCE STANDARDS

Compliance with Community Directives
2014/35/EU (LVD) 2014/30/EU (EMCD)
is declared with reference to the following harmonized standards: • CEI EN 60730-2-9



Information to users pursuant to art. 14 of the directive 2012/19 / EU of the European Parliament and of the Council of 4 July 2012 on waste electrical and electronic equipment (WEEE)

If the crossed-out bin symbol appears on the equipment or packaging, this means the product must not be included with other general waste at the end of its working life.

The user must take the worn product to a sorted waste center, or return it to the retailer when purchasing a new one.

Products for disposal can be consigned free of charge (without any new purchase obligation) to retailers with a sales area of at least 400 m², if they measure less than 25 cm.

An efficient sorted waste collection for the environmentally friendly disposal of the used device, or its subsequent recycling, helps avoid the potential negative effects on the environment and people's health, and encourages the re-use and/or recycling of the construction materials.

1 User Manual

FLUSH-MOUNTING ELECTRONIC THERMOSTAT

⚠ Read all instructions carefully

Flush-mounting electronic thermostat for temperature control both in heating and cooling. It performs actions of type 1B and are intended for operating in environments with Pollution Degree 2 and Overvoltage Category III (EN60730-1).

Code	Model	Description
VE780300	CELO LCD	Flush-mounting thermostat - 2 modules 230 VAC
VE780301	CELO LCD-INT	Flush-mounting thermostat - 2 modules 230 VAC
VE780302	NOW.CELO LCD	Flush-mounting thermostat - 2 modules 230 VAC

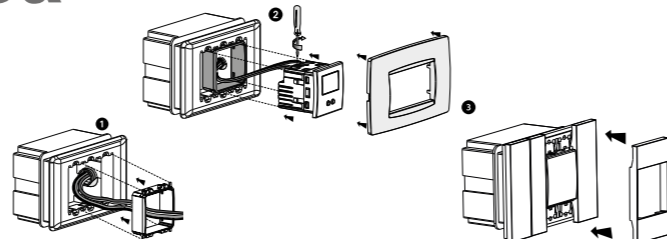
SAFETY WARNINGS

- During product installation and operation it is necessary to observe the following instructions:
- 1) The device must be installed by a qualified person, in strict compliance with the connection diagrams.
 - 2) Do not power or connect the device if any part of it is damaged
 - 3) After installation, inaccessibility to the connection terminals without appropriate tools must be guaranteed.
 - 4) The device must be installed and activated in compliance with current electric systems standards.
 - 5) Before accessing the connection terminals, verify that the leads are not live.
 - 6) In the electrical system of the building where the device must be installed, a protection device from the overcurrents must be present.

TECHNICAL SPECIFICATIONS

- Power supply: 230Vac (-15% ÷ +10%) 50/60Hz - max absorption: 6 VA / 230Vac
- Installation on flush-mounting box with 45 mm height
- Terminal block for cables with a maximum section of 1.5 mm²
- Summer/winter/off operating mode (with antifreeze)
- Password protected lock keypad
- Regulation type:
 - on/off with settable differential (0.1 ÷ 1 °C)
 - P8 proportional with 0.8°C band (-0.3 ÷ 0.5 °C) and period 8 minutes
 - P15 proportional with 1.5°C band (-0.7 ÷ 0.8 °C) and period 15 minutes
- Measurement precision: ± 0.5 °C
- Measurement temperature resolution: 0.1 °C
- Setpoint range: 2°C ÷ 50 °C
- Operating temperature: 0 °C ÷ 50 °C
- Storage temperature: -10 °C ÷ 65 °C
- Operating humidity: 20÷90% non condensing
- Protection degree: IP40
- Insulation: reinforced among accessible parts (frontal) and all other terminals
- Backlight: blue color

6a CELO LCD (cod. VE780300) - NOW.CELO LCD (cod. VE780302) MOUNTING



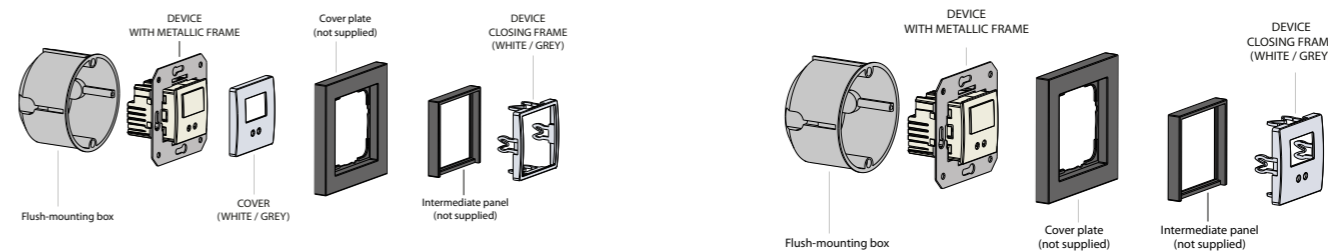
- ① Apply the adapter corresponding to the plate of the civil series to be mounted (see civil series compatibility table)
- ② Connect the load and the power supply (see connection diagram), insert the device into the adapter and fix the cover plate of the civil series supplied
- ③ With B-Ticino Living Now insert the closing frame too

Adapters with VE780300	Plates
AM	ABB series: Mylos
A4	AVE series: S44
BA	BTICINO series: Axolute, Axolute AIR
BL	BTICINO series: Light, Living International, LivingLight, LivingLight AIR
GC	GEWISS series: Chorus
VE	VIMAR series: Arké, Eikon, Eikon Evo
VP	VIMAR series: Plana
Adapter with VE780302	Plate
LN-2	BTICINO series: Living Now

For information on the possibility of adapting the device with plates different from those shown, contact the Technical Assistance Service.

6b CELO LCD-INT MOUNTING (code VE780301)

The device can be adapted to the cover plates of Berker, Busch-Jaeger, Gira, Jung and Merten, using one of the two assembly sequences illustrated below. The complete list of compatible cover plates is available on the website www.vemer.it on the product page.



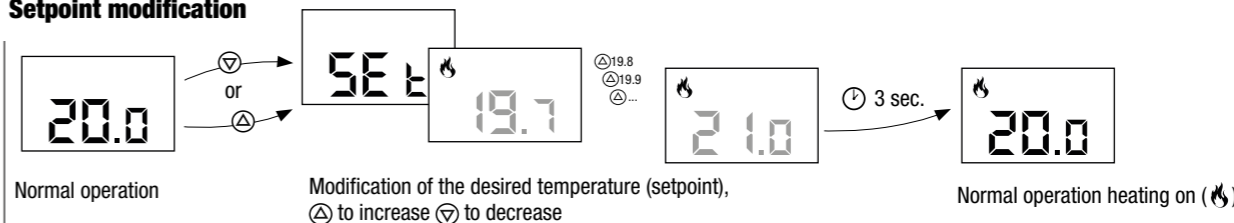
- ① Connect the load and power supply (see connection diagram)
- ② Fasten the device with the metal frame to the flush mounting box and mount the cover of the device (colour white / grey)
- ③ Apply the cover plate and the 50x50mm intermediate panel
- ④ Finally insert the closing frame (colour white / grey)

- ① Connect the load and power supply (see connection diagram)
- ② Fasten the device with the metal frame to the flush mounting box
- ③ Apply the cover plate and the 50x50mm intermediate panel
- ④ Finally insert the closing frame

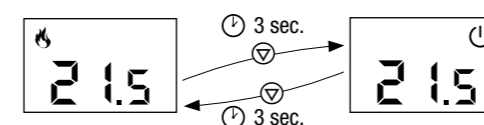
7 OPERATION

During the standard operation the thermostat displays the detected temperature value and the relay status is identified by the symbol (heating mode) or the symbol (cooling mode).

Setpoint modification



Switch off



Note: in heating mode (winter), the device if off, it regulates according to the antifreeze temperature **Toff** in order to prevent freezing of the system.

Error messages

- Occurs for the following values of measured temperature:
t < 0 °C
t > 50 °C
- Occurs in case of probe failure.
In this condition, the relay remains open and the temperature regulation is suspended.

Advanced programming

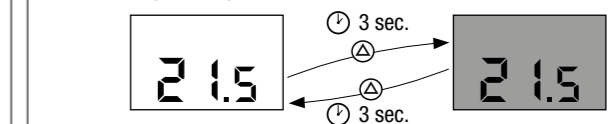
To enter menu Advanced programming keep simultaneously pressed for 3 seconds the keys and until **Pr** will appear. The items of the menu are displayed in succession. For each item is displayed an identification abbreviation and its relative blinking value.
Use the keys and to modify the value. The passage to the next parameter occurs after 3 seconds without pressing any key. Once all parameters are set the writing **End** is displayed and the thermostat returns to normal operation saving the effected modifications.

- Minimum settable setpoint - L₀**
It's the minimum value settable as setpoint.
Settable values: 2 ÷ 50 °C
- Maximum settable setpoint - H₁**
It's the maximum value settable as setpoint.
Settable values: L₀ ÷ 50 °C
- Operating mode - E - 1**
 if connected to the boiler (heating)
 if connected to a cooling system
- Antifreeze temperature - Toff** - (only in heating)
Minimum temperature maintained with device off (see box «Switch off»)
Settable values: 1 ÷ 50 °C or ... (excluded function)
- Regulation type - rEG** - (only in heating)
0 = on/off with settable differential
P8 = proportional with band 0.8°C and period 8 minutes
P15 = proportional with band 1.5°C and period 15 minutes
- Differential - d_{0.3}** - (only for on/off regulation)
Differential (or hysteresis) for temperature regulation.
Settable values: 0.1 ÷ 1 °C

- Password for keypad lock - PR5**
Set a value between 001 and 999 to activate the keypad lock. Set "..." to disable the lock.
If the keypad lock is active, pressing one key **Loc** appears and the password is required. If it's properly inserted the keyboard is unlocked for the next 30 seconds.

Backlighting management

To turn the backlight off / on, press the button for 3 seconds. In this condition the thermostat continues to operate normally and the backlighting turns on when you enter setpoint modification menus, advanced programming, enter Password.



Reset

Reset to delete the settings you made and reload the default values.

- To reset:
- 1 remove and restore power to the device.
 - 2 during the flashing of the backlighting press the keys and until **dEF** will appear.

Default values	
Heating setpoint	21 °C
Cooling setpoint	25 °C
Minimum settable setpoint - L ₀	2 °C
Maximum settable setpoint - H ₁	50 °C
Operating mode	(heating)
Antifreeze temperature	6 °C
Regulation type	On/Off
Differential	0.3 °C
Password	... (disabled)