

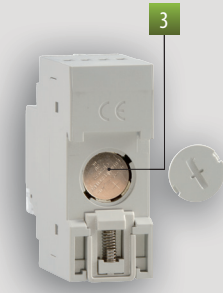
Time/astronomical switches

Modular digital time switches for the management of electrical loads over time with maximum precision. They allow a time programming with daily, weekly or yearly or astronomical periodicity; in the case of memo BT2 and memo BT Y2 it is possible to associate to each channel a different programming (time or astronomical). The Bluetooth interface allows the coupling with smartphone and tablet to transfer the programs made on the smartphone thanks to the dedicated app. The backup battery allows you to keep date and time, settings and programmings even in the absence of power.



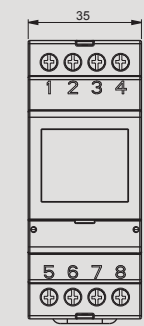
MEMO BT

- Wide backlit display to visualize date, time and relay status
- Sealable cover
- Cover on the back for battery replacement
- Bluetooth integrated interface for exchanging program from and to the dedicated app
- Free app for iOS and Android smartphone and tablet

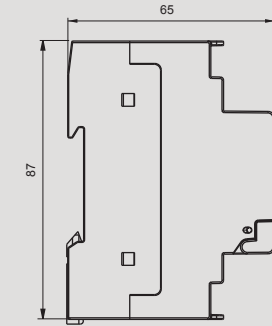


DIMENSIONS (mm)

Front view

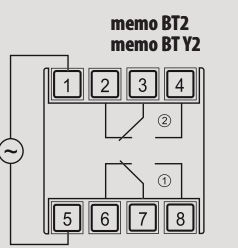
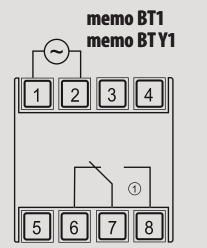


Side view



CONNECTION DIAGRAM

Diagram



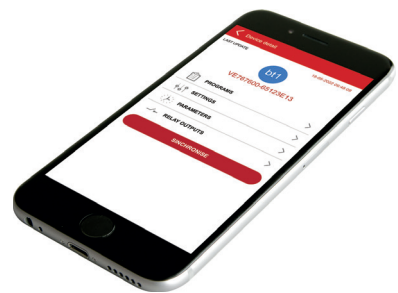
TIME AND MANAGEMENT

DAILY/WEEKLY/YEARLY SWITCHES WITH BLUETOOTH INTERFACE

- Versions with 1 or 2 relay outputs
- Time programming (daily, weekly or yearly) or astronomical
- Programs: ON, OFF, pulse (from 1 to 59 seconds), holidays, night (astronomical)
- Random switching function of the outputs
- Relay manual override (temporary or permanent)
- Automatic summer time update
- Correction of calculated sunrise and sunset time: ± 120 minutes
- Battery life: 5 years (replaceable)
- Low battery signaling
- Bluetooth BLE 4.1 interface
- Keypad lock by password
- Menu in 5 languages: Italian, English, Spanish, German, French

What you can do with the app

- Create programs directly on the smartphone
- Transfer programs created on several time switches memo
- Acquire programs from one memo and copy them to other memo (copy / paste)
- Switch relay outputs manually
- Acquire settings (date, time, coordinates) automatically and transfer them to the memo



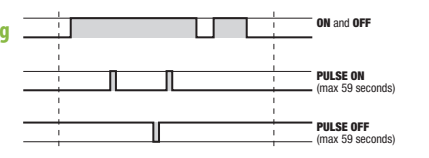
Code	Model	Description	n. relays	Power supply
VE767600	memo BT1	Daily/weekly/astronomical/time switch with 1 relay and Bluetooth interface	1	230 V AC
VE767601	memo BT1	Daily/weekly/astronomical/time switch with 1 relay and Bluetooth interface	1	115 V AC
VE767700	memo BT2	Daily/weekly/astronomical/time switch with 2 relays and Bluetooth interface	2	230 V AC
VE767701	memo BT2	Daily/weekly/astronomical/time switch with 2 relays and Bluetooth interface	2	115 V AC
VE788400	memo BT Y1	Daily / weekly / yearly / astronomical time switch with 1 relay and Bluetooth interface	1	230 V AC
VE788500	memo BT Y2	Daily / weekly / yearly / astronomical time switch with 2 relays and Bluetooth interface	2	230 V AC

TECHNICAL INFORMATION

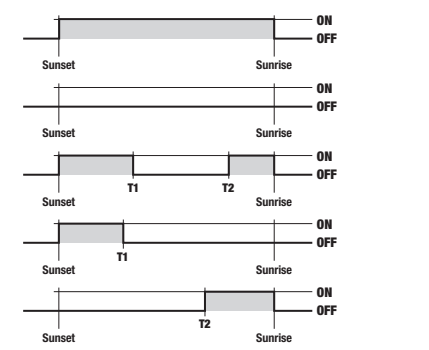
GENERAL CHARACTERISTICS

Power supply	Vac	115 or 230 (± 10%) 50 / 60Hz (depending on the model)
Absorption	VA (W)	8 (2)
Output:	memo BT1, memo BT Y1 memo BT2, memo BT Y2	1 change-over relay 2 change-over relays
Relay capacity at 250 Vac	A	16 (10)
Incandescent lamps	W	2000
Fluorescent lamps (compensated)	VA	250
Low voltage halogen lamps	VA	1000
Halogen lamps (at 240 V)	W	2000
Low consumption lamps (CFL)	VA	200
Low consumption lamps (Downlights)	VA	200
LED	VA	25
Battery life		5 years (Lithium battery CR-2032)
Charge reserve (for battery replacement)		1 minute
Switchings in case of power failure		no
Programming resolution		1 minute
N. programs (events)		120
Operating temperature	°C	-20 ÷ 50
Storage temperature	°C	-25 ÷ 70
Degree of protection		IP20 / IP41 (on the front)

Time programming



Astronomical programming



T1 and T2 can be:
1. a precise hour
2. a delay compared at sunset (T1) or an advance respect at sunrise (T2)
3. a pulse with a maximum duration of 59 seconds at sunset (T1) or at sunrise (T2)

REFERENCE STANDARDS

Compliance with Community Directives: 2014/53/EU (RED) is declared with reference to the following standards:
• EN 60730-2-7 • ETSI EN 301 489-1 • ETSI EN 301 489-17 • ETSI EN 300 328



MEMO BT-ENG-202209

